

## Cyclin D1 Polyclonal Antibody

### Description

<b>Product type</b>	Primary Antibody
<b>Code</b>	BT-AP02350
<b>Host</b>	Rabbit
<b>Isotype</b>	IgG
<b>Size</b>	20ul, 50ul, 100ul
<b>Immunogen</b>	Recombinant Protein of Cyclin D1
<b>Mol wt</b>	33729
<b>Species reactivity</b>	Rat, Mouse
<b>Clonality</b>	Polyclonal
<b>Recommended application</b>	WB, IHC-p
<b>Concentration</b>	1 mg/ml
<b>Full name</b>	Cyclin D1 Antibody
<b>Synonyms</b>	G1/S-specific cyclin-D1 (B-cell lymphoma 1 protein) (BCL-1) (BCL-1 oncogene) (PRAD1 oncogene)

**This product is for research use only, not for use in human, therapeutic or diagnostic procedure.**

### Background

Cyclin D1 encoded by CCND1 belongs to the highly conserved cyclin family, whose members are characterized by a dramatic periodicity in protein abundance throughout the cell cycle. Cyclins function as regulators of CDK kinases. Different cyclins exhibit distinct expression and degradation patterns which contribute to the temporal coordination of each mitotic event. This cyclin forms a complex with and functions as a regulatory subunit of CDK4 or CDK6, whose activity is required for cell cycle G1/S transition. Cyclin D1 has been shown to interact with tumor suppressor protein Rb and the expression of this gene is regulated positively by Rb. Mutations, amplification and overexpression of CCND1, which alters cell cycle progression, are observed frequently in a variety of tumors and may contribute to tumorigenesis.

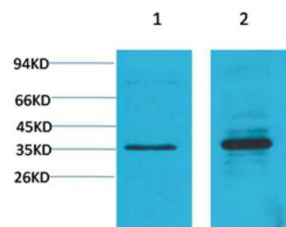
### Recommended Dilution

WB: 1: 500 - 1: 2000

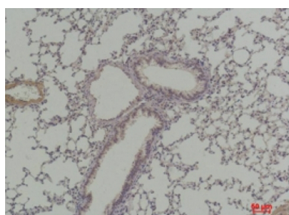
IHC: 1: 50 - 1: 200

Not yet tested in other applications.

### Images



Western blot analysis of 1) C2C12, 2) Rat Heart Tissue with Cyclin D1 Rabbit pAb diluted at 1:2,000.



Immunohistochemical analysis of paraffin-embedded Mouse Lung Tissue using Cyclin D1 Rabbit pAb diluted at 1:200.

## Storage

-20°C for one year

501 Changsheng S Rd, Nanhu Dist, Jiaxing, Zhejiang, China

Tel: 86 21 31007137 | E-mail: [save@bt-laboratory.com](mailto:save@bt-laboratory.com) | [www.bt-laboratory.com](http://www.bt-laboratory.com)