

Cyclin E1 Polyclonal Antibody

Description

Product type	Primary Antibody
Code	BT-AP02355
Host	Rabbit
Isotype	IgG
Size	20ul, 50ul, 100ul
Immunogen	The antiserum was produced against synthesized peptide derived from human Cyclin E1. AA range:361-410
Mol wt	47077
Species reactivity	Human
Clonality	Polyclonal
Recommended application	WB, IHC-p, IF, ELISA
Concentration	1 mg/ml
Full name	Cyclin E1 Antibody
Synonyms	CCNE1; CCNE; G1/S-specific cyclin-E1

This product is for research use only, not for use in human, therapeutic or diagnostic procedure.

Background

The protein encoded by CCNE1 (cyclin E1) belongs to the highly conserved cyclin family, whose members are characterized by a dramatic periodicity in protein abundance through the cell cycle. Cyclins function as regulators of CDK kinases. Different cyclins exhibit distinct expression and degradation patterns which contribute to the temporal coordination of each mitotic event. This cyclin forms a complex with and functions as a regulatory subunit of CDK2, whose activity is required for cell cycle G1/S transition. This protein accumulates at the G1-S phase boundary and is degraded as cells progress through S phase. Overexpression of CCNE1 has been observed in many tumors, which results in chromosome instability, and thus may contribute to tumorigenesis. This protein was found to associate with, and be involved in, the phosphorylation of NPAT protein (nuclear protein mapped to the ATM locus), which participates in cell-cycle regulated histone gene expression and plays a critical role in promoting cell-cycle progression in the absence of pRB.

Recommended Dilution

WB: 1: 500 - 1: 2000

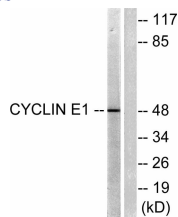
IHC: 1: 100 - 1: 300

IF: 1: 200 - 1: 1000

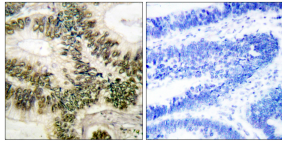
ELISA: 1: 10000

Not yet tested in other applications.

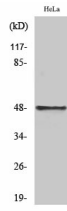
Images



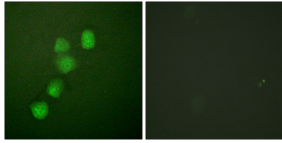
Western blot analysis of lysates from HeLa cells, treated with Paclitaxel 1uM 60', using Cyclin E1 Antibody. The lane on the right is blocked with the synthesized peptide.



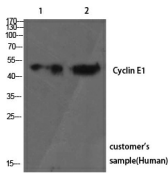
Immunohistochemistry analysis of paraffin-embedded human colon carcinoma tissue, using Cyclin E1 Antibody. The picture on the right is blocked with the synthesized peptide.



Western Blot analysis of various cells using Cyclin E1 Polyclonal Antibody diluted at 1:1000



Immunofluorescence analysis of HUVEC cells, using Cyclin E1 Antibody. The picture on the right is blocked with the synthesized peptide.



Western Blot analysis of customer's using Cyclin E1 Polyclonal Antibody. Antibody was diluted at 1:1000

Storage

-20°C for one year

501 Changsheng S Rd, Nanhu Dist, Jiaxing, Zhejiang, China

Tel: 86 21 31007137 | E-mail: save@bt-laboratory.com | www.bt-laboratory.com