

Cyclin M2 Polyclonal Antibody

Description

Product type	Primary Antibody
Code	BT-AP02361
Host	Rabbit
Isotype	IgG
Size	20ul, 50ul, 100ul
Immunogen	The antiserum was produced against synthesized peptide derived from human CNNM2. AA range:571-620
Mol wt	96623
Species reactivity	Human, Mouse, Rat
Clonality	Polyclonal
Recommended application	WB, ELISA
Concentration	1 mg/ml
Full name	Cyclin M2 Antibody
Synonyms	CNNM2; ACDP2; Metal transporter CNNM2; Ancient conserved domain-containing protein 2; Cyclin-M2

This product is for research use only, not for use in human, therapeutic or diagnostic procedure.

Background

CNNM2 encodes a member of the ancient conserved domain containing protein family. Members of this protein family contain a cyclin box motif and have structural similarity to the cyclins. The encoded protein may play an important role in magnesium homeostasis by mediating the epithelial transport and renal reabsorption of Mg²⁺. Mutations in CNNM2 are associated with renal hypomagnesemia. Alternatively spliced transcript variants encoding multiple isoforms have been observed for CNNM2.

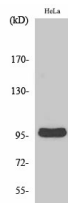
Recommended Dilution

WB: 1: 500 - 1: 2000

ELISA: 1: 10000

Not yet tested in other applications.

Images



Western Blot analysis of various cells using Cyclin M2 Polyclonal Antibody

Storage

-20°C for one year