

CYFIP2 Polyclonal Antibody

Description

Product type	Primary Antibody
Code	BT-AP02367
Host	Rabbit
Isotype	IgG
Size	20ul, 50ul, 100ul
Immunogen	Synthesized peptide derived from CYFIP2 at AA range: 1171-1220
Mol wt	148399
Species reactivity	Human, Mouse, Rat
Clonality	Polyclonal
Recommended application	WB, ELISA
Concentration	1 mg/ml
Full name	CYFIP2 Antibody
Synonyms	Cytoplasmic FMR1-interacting protein 2 (p53-inducible protein 121)

This product is for research use only, not for use in human, therapeutic or diagnostic procedure.

Background

CYFIP2 belongs to the CYFIP family and is involved in T-cell adhesion and p53-dependent induction of apoptosis. CYFIP2 mRNA is ubiquitously expressed and particularly abundant in the central nervous system. Recently, CYFIP2 was regarded as one of the ALS potential biomarkers in non-neural tissues from amyotrophic lateral sclerosis (ALS) patients that may have direct diagnostic and therapeutic implications to the disease.

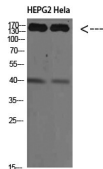
Recommended Dilution

WB: 1: 500 - 2000

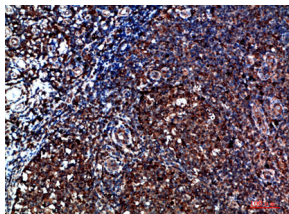
ELISA: 1: 10000 - 20000

Not yet tested in other applications.

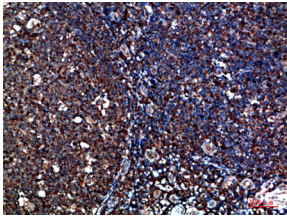
Images



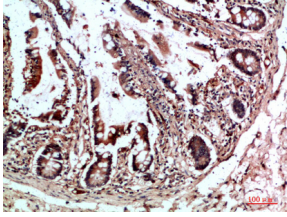
Western Blot analysis of HEPG2 HeLa cells using CYFIP2 Polyclonal Antibody diluted at 1:500.
Secondary antibody was diluted at 1:20000



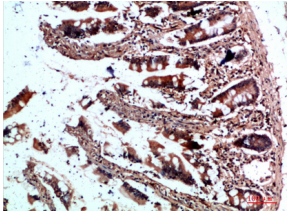
Immunohistochemical analysis of paraffin-embedded human-tonsil, antibody was diluted at 1:200



Immunohistochemical analysis of paraffin-embedded human-tonsil, antibody was diluted at 1:200



Immunohistochemical analysis of paraffin-embedded human-colon, antibody was diluted at 1:200



Immunohistochemical analysis of paraffin-embedded human-colon, antibody was diluted at 1:200

Storage

-20°C for one year

501 Changsheng S Rd, Nanhu Dist, Jiaxing, Zhejiang, China

Tel: 86 21 31007137 | E-mail: save@bt-laboratory.com | www.bt-laboratory.com