

EFS Rabbit Polyclonal Antibody

Description

Product type	Primary Antibody
Code	BT-AP02373
Host	Rabbit
Isotype	IgG
Size	20ul, 50ul, 100ul
Immunogen	Synthesized peptide derived from human EFS
Mol wt	N/A
Species reactivity	Human, Mouse
Clonality	Polyclonal
Recommended application	WB
Concentration	1 mg/ml
Full name	EFS
Synonyms	EFS; Embryonal Fyn-associated substrate; hEFS; Cas scaffolding protein family member 3)

This product is for research use only, not for use in human, therapeutic or diagnostic procedure.

Background

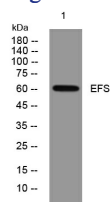
The longest protein isoform encoded by this gene contains an SH3 domain| which is known to be important in intracellular signal transduction. The protein encoded by a similar gene in mice was shown to bind to SH3 domains of protein-tyrosine kinases. The function of this gene is unknown. Three alternatively spliced variants encoding different isoforms have been described for this gene.

Recommended Dilution

WB: 1: 500 - 1: 2000

Not yet tested in other applications.

Images



Western blot analysis of lysates from SH-SY5Y cells, primary antibody was diluted at 1:1000, 4°C overnight

Storage

-20°C for 1 year

501 Changsheng S Rd, Nanhu Dist, Jiaxing, Zhejiang, China

Tel: 86 21 31007137 | E-mail: save@bt-laboratory.com | www.bt-laboratory.com