

CYP11B1/2 Polyclonal Antibody

Description

Product type	Primary Antibody
Code	BT-AP02376
Host	Rabbit
Isotype	IgG
Size	20ul, 50ul, 100ul
Immunogen	The antiserum was produced against synthesized peptide derived from the N-terminal region of human CYP11B1/2. AA range:61-110
Mol wt	57529/57560
Species reactivity	Human
Clonality	Polyclonal
Recommended application	WB, ELISA
Concentration	1 mg/ml
Full name	CYP11B1/2 Antibody
Synonyms	CYP11B1; S11BH; Cytochrome P450 11B1, mitochondrial; CYPX1B1; Cytochrome P-450c11; Cytochrome P450C11; Steroid 11-beta-hydroxylase; CYP11B2; Cytochrome P450 11B2, mitochondrial; Aldosterone synthase; A

This product is for research use only, not for use in human, therapeutic or diagnostic procedure.

Background

CYP11B1 encodes a member of the cytochrome P450 superfamily of enzymes. The cytochrome P450 proteins are monooxygenases which catalyze many reactions involved in drug metabolism and synthesis of cholesterol, steroids and other lipids. This protein localizes to the mitochondrial inner membrane and is involved in the conversion of progesterone to cortisol in the adrenal cortex. Mutations in this gene cause congenital adrenal hyperplasia due to 11-beta-hydroxylase deficiency. Transcript variants encoding different isoforms have been noted for CYP11B1.

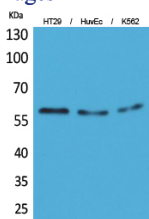
Recommended Dilution

WB: 1: 500 - 1: 2000

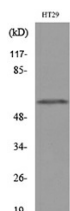
ELISA: 1: 20000

Not yet tested in other applications.

Images



Western Blot analysis of HT29, HuvEc, K562 cells using CYP11B1/2 Polyclonal Antibody. Secondary antibody was diluted at 1:20000



Western blot analysis of lysate from HT29 cells, using CYP11B1/2 Antibody.

Storage

-20°C for one year

501 Changsheng S Rd, Nanhu Dist, Jiaxing, Zhejiang, China

Tel: 86 21 31007137 | E-mail: save@bt-laboratory.com | www.bt-laboratory.com