

CYP1A2 Polyclonal Antibody

Description

Product type	Primary Antibody
Code	BT-AP02381
Host	Rabbit
Isotype	IgG
Size	20ul, 50ul, 100ul
Immunogen	The antiserum was produced against synthesized peptide derived from human Cytochrome P450 1A2. AA range:331-380
Mol wt	58294
Species reactivity	Human, Mouse, Rat
Clonality	Polyclonal
Recommended application	IHC-p, ELISA
Concentration	1 mg/ml
Full name	CYP1A2 Antibody
Synonyms	CYP1A2; Cytochrome P450 1A2; CYP1A2; Cytochrome P(3)450; Cytochrome P450 4; Cytochrome P450-P3

This product is for research use only, not for use in human, therapeutic or diagnostic procedure.

Background

CYP1A2 encodes a member of the cytochrome P450 superfamily of enzymes. The cytochrome P450 proteins are monooxygenases which catalyze many reactions involved in drug metabolism and synthesis of cholesterol, steroids and other lipids. The protein encoded by this gene localizes to the endoplasmic reticulum and its expression is induced by some polycyclic aromatic hydrocarbons (PAHs), some of which are found in cigarette smoke. The enzyme's endogenous substrate is unknown; however, it is able to metabolize some PAHs to carcinogenic intermediates. Other xenobiotic substrates for this enzyme include caffeine, aflatoxin B1, and acetaminophen. The transcript from this gene contains four Alu sequences flanked by direct repeats in the 3' untranslated region.

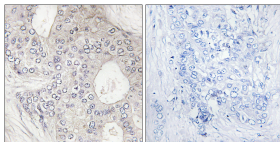
Recommended Dilution

IHC: 1: 100 - 1: 300

ELISA: 1: 10000

Not yet tested in other applications.

Images



Immunohistochemistry analysis of paraffin-embedded human breast carcinoma tissue, using Cytochrome P450 1A2 Antibody. The picture on the right is blocked with the synthesized peptide.

Storage

-20°C for one year