

## CYP20A1 Polyclonal Antibody

### Description

<b>Product type</b>	Primary Antibody
<b>Code</b>	BT-AP02383
<b>Host</b>	Rabbit
<b>Isotype</b>	IgG
<b>Size</b>	20ul, 50ul, 100ul
<b>Immunogen</b>	The antiserum was produced against synthesized peptide derived from human Cytochrome P450 20A1. AA range:191-240
<b>Mol wt</b>	52432
<b>Species reactivity</b>	Human
<b>Clonality</b>	Polyclonal
<b>Recommended application</b>	WB, ELISA
<b>Concentration</b>	1 mg/ml
<b>Full name</b>	CYP20A1 Antibody
<b>Synonyms</b>	CYP20A1; Cytochrome P450 20A1

This product is for research use only, not for use in human, therapeutic or diagnostic procedure.

### Background

CYP20A1 (cytochrome P450 family 20 subfamily A member 1) encodes a member of the cytochrome P450 superfamily of enzymes. The cytochrome P450 proteins are monooxygenases that catalyze many reactions involved in drug metabolism and synthesis of cholesterol, steroids and other lipids. This protein lacks one amino acid of the conserved heme binding site. It also lacks the conserved I-helix motif AGX (D,E)T, suggesting that its substrate may carry its own oxygen.

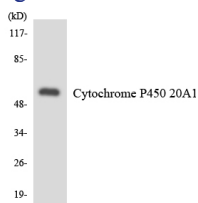
### Recommended Dilution

WB: 1: 500 - 1: 2000

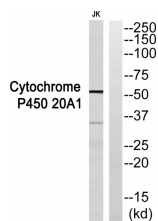
ELISA: 1: 40000

Not yet tested in other applications.

### Images



Western blot analysis of the lysates from HUVEC cells using Cytochrome P450 20A1 antibody.



Western blot analysis of Cytochrome P450 20A1 Antibody. The lane on the right is blocked with the Cytochrome P450 20A1 peptide.

## Storage

-20°C for one year

501 Changsheng S Rd, Nanhu Dist, Jiaxing, Zhejiang, China

Tel: 86 21 31007137 | E-mail: [save@bt-laboratory.com](mailto:save@bt-laboratory.com) | [www.bt-laboratory.com](http://www.bt-laboratory.com)