

CYP21A2 Polyclonal Antibody

Description

Product type	Primary Antibody
Code	BT-AP02384
Host	Rabbit
Isotype	IgG
Size	20ul, 50ul, 100ul
Immunogen	Synthesized peptide derived from the Internal region of human CYP21A2.
Mol wt	55887
Species reactivity	Human
Clonality	Polyclonal
Recommended application	WB, ELISA
Concentration	1 mg/ml
Full name	CYP21A2 Antibody
Synonyms	CYP21A2; CYP21; CYP21B; Steroid 21-hydroxylase; 21-OHase; Cytochrome P-450c21; Cytochrome P450 21; Cytochrome P450 XXI; Cytochrome P450-C21; Cytochrome P450-C21B

This product is for research use only, not for use in human, therapeutic or diagnostic procedure.

Background

CYP21A2 encodes a member of the cytochrome P450 superfamily of enzymes. The cytochrome P450 proteins are monooxygenases which catalyze many reactions involved in drug metabolism and synthesis of cholesterol, steroids and other lipids. Cytochrome P450 family 21 subfamily A member 2 localizes to the endoplasmic reticulum and hydroxylates steroids at the 21 position. Its activity is required for the synthesis of steroid hormones including cortisol and aldosterone. Mutations in this gene cause congenital adrenal hyperplasia. A related pseudogene is located near this gene; gene conversion events involving the functional gene and the pseudogene are thought to account for many cases of steroid 21-hydroxylase deficiency. Two transcript variants encoding different isoforms have been found for this gene.

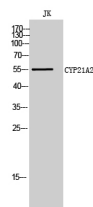
Recommended Dilution

WB: 1: 500 - 1: 2000

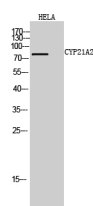
ELISA: 1: 40000

Not yet tested in other applications.

Images



Western Blot analysis of JK cells using CYP21A2 Polyclonal Antibody



Western Blot analysis of HELA cells using CYP21A2 Polyclonal Antibody diluted at 1:1000

Storage

-20°C for one year

501 Changsheng S Rd, Nanhu Dist, Jiaxing, Zhejiang, China

Tel: 86 21 31007137 | E-mail: save@bt-laboratory.com | www.bt-laboratory.com