

## CYP26A1 Polyclonal Antibody

### Description

<b>Product type</b>	Primary Antibody
<b>Code</b>	BT-AP02388
<b>Host</b>	Rabbit
<b>Isotype</b>	IgG
<b>Size</b>	20ul, 50ul, 100ul
<b>Immunogen</b>	The antiserum was produced against synthesized peptide derived from human Cytochrome P450 26A1. AA range:251-300
<b>Mol wt</b>	56163
<b>Species reactivity</b>	Human, Mouse, Rat
<b>Clonality</b>	Polyclonal
<b>Recommended application</b>	WB, IF, ELISA
<b>Concentration</b>	1 mg/ml
<b>Full name</b>	CYP26A1 Antibody
<b>Synonyms</b>	CYP26A1; CYP26; P450RAI1; Cytochrome P450 26A1; Cytochrome P450 retinoic acid-inactivating 1; Cytochrome P450RAI; hP450RAI; Retinoic acid 4-hydroxylase; Retinoic acid-metabolizing cytochrome

**This product is for research use only, not for use in human, therapeutic or diagnostic procedure.**

### Background

CYP26A1 encodes a member of the cytochrome P450 superfamily of enzymes. The cytochrome P450 proteins are monooxygenases which catalyze many reactions involved in drug metabolism and synthesis of cholesterol, steroids and other lipids. This endoplasmic reticulum protein acts on retinoids, including all-trans-retinoic acid (RA), with both 4-hydroxylation and 18-hydroxylation activities. This enzyme regulates the cellular level of retinoic acid which is involved in regulation of gene expression in both embryonic and adult tissues. Two alternatively spliced transcript variants of CYP26A1, which encode the distinct isoforms, have been reported.

### Recommended Dilution

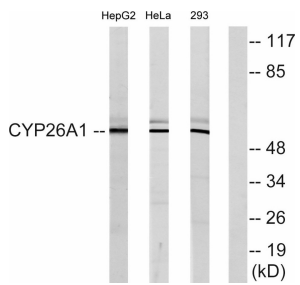
WB: 1: 500 - 1: 2000

IF: 1: 200 - 1: 1000

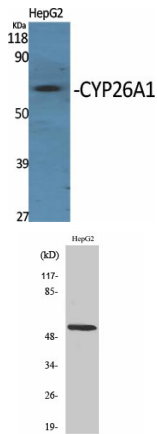
ELISA: 1: 20000

Not yet tested in other applications.

### Images



Western blot analysis of lysates from HepG2, HeLa, and 293 cells, using Cytochrome P450 26A1 Antibody. The lane on the right is blocked with the synthesized peptide.



Western Blot analysis of various cells using CYP26A1 Polyclonal Antibody diluted at 1:1000

Western Blot analysis of 293 cells using CYP26A1 Polyclonal Antibody diluted at 1:1000

### Storage

-20°C for one year

501 Changsheng S Rd, Nanhu Dist, Jiaxing, Zhejiang, China

Tel: 86 21 31007137 | E-mail: [save@bt-laboratory.com](mailto:save@bt-laboratory.com) | [www.bt-laboratory.com](http://www.bt-laboratory.com)