

CYP26C1 Polyclonal Antibody

Description

Product type	Primary Antibody
Code	BT-AP02390
Host	Rabbit
Isotype	IgG
Size	20ul, 50ul, 100ul
Immunogen	The antiserum was produced against synthesized peptide derived from human CYP26C1. AA range:41-90
Mol wt	57111
Species reactivity	Human
Clonality	Polyclonal
Recommended application	IHC-p, ELISA
Concentration	1 mg/ml
Full name	CYP26C1 Antibody
Synonyms	CYP26C1; Cytochrome P450 26C1

This product is for research use only, not for use in human, therapeutic or diagnostic procedure.

Background

CYP26C1 encodes a member of the cytochrome P450 superfamily of enzymes. The cytochrome P450 proteins are monooxygenases which catalyze many reactions involved in drug metabolism and synthesis of cholesterol, steroids and other lipids. This enzyme is involved in the catabolism of all-trans- and 9-cis-retinoic acid, and thus contributes to the regulation of retinoic acid levels in cells and tissues. This gene is adjacent to a related gene on chromosome 10q23.3.

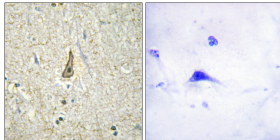
Recommended Dilution

IHC: 1: 100 - 1: 300

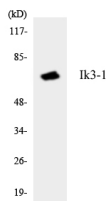
ELISA: 1: 40000

Not yet tested in other applications.

Images



Immunohistochemistry analysis of paraffin-embedded human brain, using Cytochrome P450 26C1 Antibody. The picture on the right is blocked with the synthesized peptide.



Western blot analysis of the lysates from HeLa cells using Ik3-1 antibody.

Storage

-20°C for one year