

CYP2A7 Polyclonal Antibody

Description

Product type	Primary Antibody
Code	BT-AP02398
Host	Rabbit
Isotype	IgG
Size	20ul, 50ul, 100ul
Immunogen	Synthesized peptide derived from the C-terminal region of human CYP2A7.
Mol wt	56408
Species reactivity	Human
Clonality	Polyclonal
Recommended application	WB, IHC-p, ELISA
Concentration	1 mg/ml
Full name	CYP2A7 Antibody
Synonyms	CYP2A7; Cytochrome P450 2A7; CYP11A7; Cytochrome P450 IIA4

This product is for research use only, not for use in human, therapeutic or diagnostic procedure.

Background

CYP2A7 encodes a member of the cytochrome P450 superfamily of enzymes. The cytochrome P450 proteins are monooxygenases which catalyze many reactions involved in drug metabolism and synthesis of cholesterol, steroids and other lipids. This protein localizes to the endoplasmic reticulum; its substrate has not yet been determined. CYP2A7, which produces two transcript variants, is part of a large cluster of cytochrome P450 genes from the CYP2A, CYP2B and CYP2F subfamilies on chromosome 19q.

Recommended Dilution

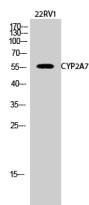
WB: 1: 500 - 1: 2000

IHC: 1: 100 - 1: 300

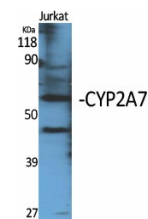
ELISA: 1: 40000

Not yet tested in other applications.

Images



Western Blot analysis of 22RV1 cells using CYP2A7 Polyclonal Antibody diluted at 1:2000



Western Blot analysis of various cells using CYP2A7 Polyclonal Antibody diluted at 1:2000

Storage

-20°C for one year

501 Changsheng S Rd, Nanhu Dist, Jiaxing, Zhejiang, China

Tel: 86 21 31007137 | E-mail: save@bt-laboratory.com | www.bt-laboratory.com