

CYP2B6 Polyclonal Antibody

Description

Product type	Primary Antibody
Code	BT-AP02400
Host	Rabbit
Isotype	IgG
Size	20ul, 50ul, 100ul
Immunogen	Synthesized peptide derived from the Internal region of human CYP2B6.
Mol wt	56408
Species reactivity	Human
Clonality	Polyclonal
Recommended application	WB, ELISA
Concentration	1 mg/ml
Full name	CYP2B6 Antibody
Synonyms	CYP2B6; Cytochrome P450 2B6; 1; 4-cineole 2-exo-monooxygenase; CYP11B6; Cytochrome P450 IIB1

This product is for research use only, not for use in human, therapeutic or diagnostic procedure.

Background

CYP2A7 encodes a member of the cytochrome P450 superfamily of enzymes. The cytochrome P450 proteins are monooxygenases which catalyze many reactions involved in drug metabolism and synthesis of cholesterol, steroids and other lipids. This protein localizes to the endoplasmic reticulum; its substrate has not yet been determined. CYP2A7, which produces two transcript variants, is part of a large cluster of cytochrome P450 genes from the CYP2A, CYP2B and CYP2F subfamilies on chromosome 19q.

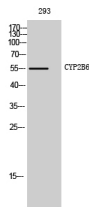
Recommended Dilution

WB: 1: 500 - 1: 2000

ELISA: 1: 40000

Not yet tested in other applications.

Images



Western Blot analysis of 293 cells using CYP2B6 Polyclonal Antibody

Storage

-20°C for one year