

## CYP2C8 Polyclonal Antibody

### Description

|                                |   |
|--------------------------------|---|
| <b>Product type</b>            | Primary Antibody  |
| <b>Code</b>                    | BT-AP02402  |
| <b>Host</b>                    | Rabbit  |
| <b>Isotype</b>                 | IgG   |
| <b>Size</b>                    | 20ul, 50ul, 100ul   |
| <b>Immunogen</b>               | The antiserum was produced against synthesized peptide derived from human CYP2C8. AA range:241-290  |
| <b>Mol wt</b>                  | 55825   |
| <b>Species reactivity</b>      | Human   |
| <b>Clonality</b>               | Polyclonal  |
| <b>Recommended application</b> | IHC-p, IF, ELISA  |
| <b>Concentration</b>           | 1 mg/ml   |
| <b>Full name</b>               | CYP2C8 Antibody   |
| <b>Synonyms</b>                | CYP2C8; Cytochrome P450 2C8; CYP11C8; Cytochrome P450 IIC2; Cytochrome P450 MP-12; Cytochrome P450 MP-20; Cytochrome P450 form 1; S-mephenytoin 4-hydroxylase |

**This product is for research use only, not for use in human, therapeutic or diagnostic procedure.**

### Background

CYP2C8 encodes a member of the cytochrome P450 superfamily of enzymes. The cytochrome P450 proteins are monooxygenases which catalyze many reactions involved in drug metabolism and synthesis of cholesterol, steroids and other lipids. This protein localizes to the endoplasmic reticulum and its expression is induced by phenobarbital. The enzyme is known to metabolize many xenobiotics, including the anticonvulsive drug mephenytoin, benzo(a)pyrene, 7-ethoxycoumarin, and the anti-cancer drug taxol. This gene is located within a cluster of cytochrome P450 genes on chromosome 10q24. Several transcript variants encoding a few different isoforms have been found for this gene.

### Recommended Dilution

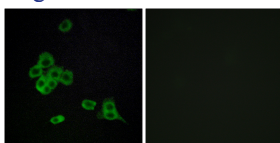
IHC-p: 1: 100 - 1: 300

IF: 1: 50 - 200

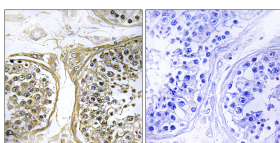
ELISA: 1: 20000

Not yet tested in other applications.

### Images



Immunofluorescence analysis of Cytochrome P450 2C8 Antibody. The lane on the right is blocked with the Cytochrome P450 2C8 peptide.



Immunohistochemistry analysis of paraffin-embedded human testis, using Cytochrome P450 2C8 Antibody. The picture on the right is blocked with the synthesized peptide.

### Storage

-20°C for one year

501 Changsheng S Rd, Nanhu Dist, Jiaxing, Zhejiang, China

Tel: 86 21 31007137 | E-mail: [save@bt-laboratory.com](mailto:save@bt-laboratory.com) | [www.bt-laboratory.com](http://www.bt-laboratory.com)