

## CYP2C8/9/18/19 Polyclonal Antibody

### Description

|                                |  |
|--------------------------------|--|
| <b>Product type</b>            | Primary Antibody   |
| <b>Code</b>                    | BT-AP02404   |
| <b>Host</b>                    | Rabbit   |
| <b>Isotype</b>                 | IgG  |
| <b>Size</b>                    | 20ul, 50ul, 100ul  |
| <b>Immunogen</b>               | The antiserum was produced against synthesized peptide derived from human Cytochrome P450 2C8/9/18/19. AA range:111-160  |
| <b>Mol wt</b>                  | 55711  |
| <b>Species reactivity</b>      | Human  |
| <b>Clonality</b>               | Polyclonal   |
| <b>Recommended application</b> | WB, IHC-p, IF, ELISA   |
| <b>Concentration</b>           | 1 mg/ml  |
| <b>Full name</b>               | CYP2C8/9/18/19 Antibody  |
| <b>Synonyms</b>                | CYP2C8; Cytochrome P450 2C8; CYP11C8; Cytochrome P450 IIC2; Cytochrome P450 MP-12; Cytochrome P450 MP-20; Cytochrome P450 form 1; S-mephenytoin 4-hydroxylase; CYP2C9; CYP2C10; Cytochrome P450 2C9; (R) |

**This product is for research use only, not for use in human, therapeutic or diagnostic procedure.**

### Background

CYP2C18 encodes a member of the cytochrome P450 superfamily of enzymes. The cytochrome P450 proteins are monooxygenases which catalyze many reactions involved in drug metabolism and synthesis of cholesterol, steroids and other lipids. Cytochrome P450 2C8/9/18/19 localizes to the endoplasmic reticulum but its specific substrate has not yet been determined. CYP2C18 is located within a cluster of cytochrome P450 genes on chromosome 10q24. An additional gene, CYP2C17, was once thought to exist; however, CYP2C17 is now considered an artefact based on a chimera of CYP2C18 and CYP2C19. Alternatively spliced transcript variants encoding different isoforms have been found for this gene.

### Recommended Dilution

WB: 1: 500 - 1: 2000

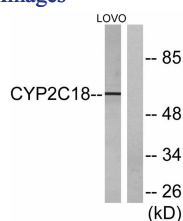
IHC: 1: 100 - 1: 300

IF: 1: 200 - 1: 1000

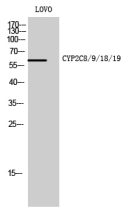
ELISA: 1: 20000

Not yet tested in other applications.

### Images



Western blot analysis of lysates from LOVO cells, using Cytochrome P450 2C8/9/18/19 Antibody. The lane on the right is blocked with the synthesized peptide.



## Western Blot analysis of LOVO cells using CYP2C8/9/18/19 Polyclonal Antibody

### Storage

-20°C for one year

501 Changsheng S Rd, Nanhu Dist, Jiaxing, Zhejiang, China

Tel: 86 21 31007137 | E-mail: [save@bt-laboratory.com](mailto:save@bt-laboratory.com) | [www.bt-laboratory.com](http://www.bt-laboratory.com)