

CYP2R1 Polyclonal Antibody

Description

Product type	Primary Antibody
Code	BT-AP02413
Host	Rabbit
Isotype	IgG
Size	20ul, 50ul, 100ul
Immunogen	The antiserum was produced against synthesized peptide derived from human CYP2R1. AA range:251-300
Mol wt	57359
Species reactivity	Human, Mouse, Monkey
Clonality	Polyclonal
Recommended application	WB, IHC-p, ELISA
Concentration	1 mg/ml
Full name	CYP2R1 Antibody
Synonyms	CYP2R1; Vitamin D 25-hydroxylase; Cytochrome P450 2R1

This product is for research use only, not for use in human, therapeutic or diagnostic procedure.

Background

CYP2R1 encodes a member of the cytochrome P450 superfamily of enzymes. The cytochrome P450 proteins are monooxygenases which catalyze many reactions involved in drug metabolism and synthesis of cholesterol, steroids and other lipids. This enzyme is a microsomal vitamin D hydroxylase that converts vitamin D into the active ligand for the vitamin D receptor. A mutation in this gene has been associated with selective 25-hydroxyvitamin D deficiency.

Recommended Dilution

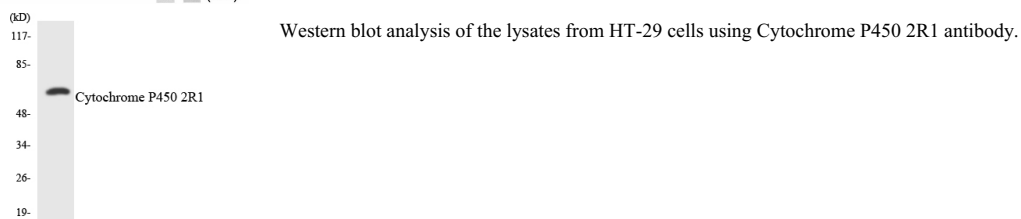
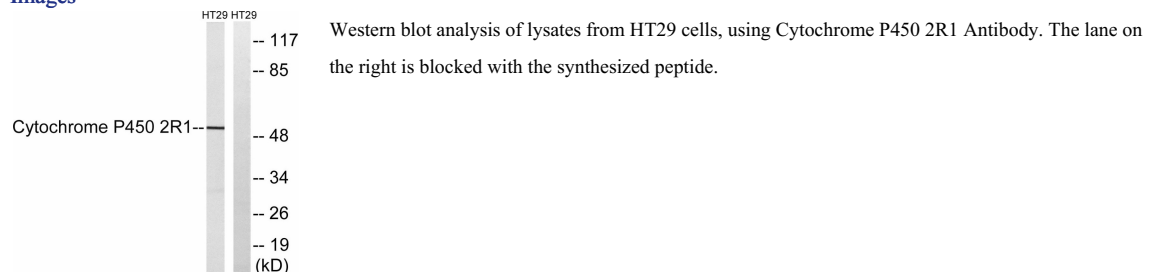
WB: 1: 500 - 1: 2000

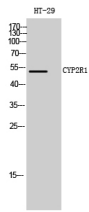
IHC: 1: 100 - 1: 300

ELISA: 1: 40000

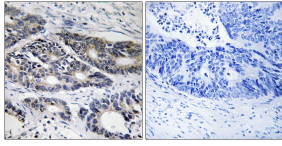
Not yet tested in other applications.

Images





Western Blot analysis of HT-29 cells using CYP2R1 Polyclonal Antibody



Immunohistochemistry analysis of paraffin-embedded human colon carcinoma, using Cytochrome P450 2R1 Antibody. The picture on the right is blocked with the synthesized peptide.

Storage

-20°C for one year

501 Changsheng S Rd, Nanhu Dist, Jiaxing, Zhejiang, China

Tel: 86 21 31007137 | E-mail: save@bt-laboratory.com | www.bt-laboratory.com