

CYP2S1 Polyclonal Antibody

Description

Product type	Primary Antibody
Code	BT-AP02414
Host	Rabbit
Isotype	IgG
Size	20ul, 50ul, 100ul
Immunogen	The antiserum was produced against synthesized peptide derived from human Cytochrome P450 2S1. AA range:181-230
Mol wt	55817
Species reactivity	Human, Mouse
Clonality	Polyclonal
Recommended application	WB, IHC-p, IF, ELISA
Concentration	1 mg/ml
Full name	CYP2S1 Antibody
Synonyms	CYP2S1; Cytochrome P450 2S1; CYP1I1S1

This product is for research use only, not for use in human, therapeutic or diagnostic procedure.

Background

CYP2S1 encodes a member of the cytochrome P450 superfamily of enzymes. The cytochrome P450 proteins are monooxygenases which catalyze many reactions involved in drug metabolism and synthesis of cholesterol, steroids and other lipids. This protein localizes to the endoplasmic reticulum. In rodents, the homologous protein has been shown to metabolize certain carcinogens; however, the specific function of the human protein has not been determined.

Recommended Dilution

WB: 1: 500 - 1: 2000

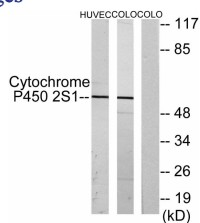
IHC: 1: 100 - 1: 300

IF: 1: 200 - 1: 1000

ELISA: 1: 5000

Not yet tested in other applications.

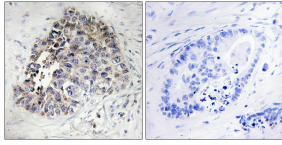
Images



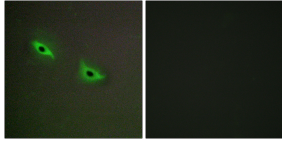
Western blot analysis of lysates from HUVEC and COLO cells, using Cytochrome P450 2S1 Antibody. The lane on the right is blocked with the synthesized peptide.



Western Blot analysis of various cells using CYP2S1 Polyclonal Antibody diluted at 1:2000



Immunohistochemistry analysis of paraffin-embedded human lung carcinoma tissue, using Cytochrome P450 2S1 Antibody. The picture on the right is blocked with the synthesized peptide.



Immunofluorescence analysis of A549 cells, using Cytochrome P450 2S1 Antibody. The picture on the right is blocked with the synthesized peptide.

Storage

-20°C for one year

501 Changsheng S Rd, Nanhu Dist, Jiaxing, Zhejiang, China

Tel: 86 21 31007137 | E-mail: save@bt-laboratory.com | www.bt-laboratory.com