

CYP2W1 Polyclonal Antibody

Description

Product type	Primary Antibody
Code	BT-AP02416
Host	Rabbit
Isotype	IgG
Size	20ul, 50ul, 100ul
Immunogen	The antiserum was produced against synthesized peptide derived from human Cytochrome P450 2W1. AA range:311-360
Mol wt	53844
Species reactivity	Human
Clonality	Polyclonal
Recommended application	WB, IHC-p, IF, ELISA
Concentration	1 mg/ml
Full name	CYP2W1 Antibody
Synonyms	CYP2W1; Cytochrome P450 2W1; CYP11W1

This product is for research use only, not for use in human, therapeutic or diagnostic procedure.

Background

CYP2W1 encodes a member of the cytochrome P450 superfamily of enzymes. The cytochrome P450 proteins are monooxygenases which catalyze many reactions involved in drug metabolism and synthesis of cholesterol, steroids and other lipids.

Recommended Dilution

WB: 1: 500 - 1: 2000

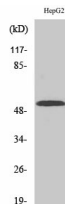
IHC: 1: 100 - 1: 300

IF: 1: 200 - 1: 1000

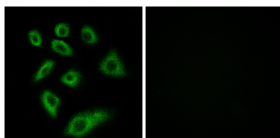
ELISA: 1: 40000

Not yet tested in other applications.

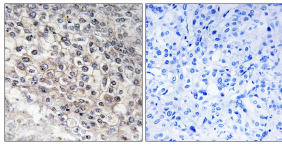
Images



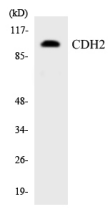
Western Blot analysis of various cells using CYP2W1 Polyclonal Antibody



Immunofluorescence analysis of HUVEC cells, using Cytochrome P450 2W1 Antibody. The picture on the right is blocked with the synthesized peptide.



Immunohistochemistry analysis of paraffin-embedded human liver carcinoma tissue, using Cytochrome P450 2W1 Antibody. The picture on the right is blocked with the synthesized peptide.



Western blot analysis of the lysates from HT-29 cells using CDH2 antibody.

Storage

-20°C for one year

501 Changsheng S Rd, Nanhu Dist, Jiaxing, Zhejiang, China

Tel: 86 21 31007137 | E-mail: save@bt-laboratory.com | www.bt-laboratory.com