

## CYP39A1 Polyclonal Antibody

### Description

|                         |   |
|-------------------------|---|
| Product type            | Primary Antibody  |
| Code                    | BT-AP02418  |
| Host                    | Rabbit  |
| Isotype                 | IgG   |
| Size                    | 20ul, 50ul, 100ul   |
| Immunogen               | Synthesized peptide derived from the Internal region of human CYP39A1.  |
| Mol wt                  | 53844   |
| Species reactivity      | Human   |
| Clonality               | Polyclonal  |
| Recommended application | WB, IHC-p, ELISA  |
| Concentration           | 1 mg/ml   |
| Full name               | CYP39A1 Antibody  |
| Synonyms                | CYP39A1; 24-hydroxycholesterol 7-alpha-hydroxylase; Cytochrome P450 39A1; hCYP39A1; Oxysterol 7-alpha-hydroxylase |

This product is for research use only, not for use in human, therapeutic or diagnostic procedure.

### Background

CYP2W1 encodes a member of the cytochrome P450 superfamily of enzymes. The cytochrome P450 proteins are monooxygenases which catalyze many reactions involved in drug metabolism and synthesis of cholesterol, steroids and other lipids.

### Recommended Dilution

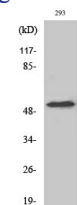
WB: 1: 500 - 1: 2000

IHC: 1: 100 - 1: 300

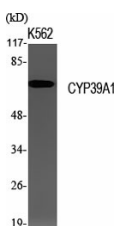
ELISA: 1: 40000

Not yet tested in other applications.

### Images



Western Blot analysis of HeLa cells using CYP39A1 Polyclonal Antibody



Western Blot analysis of various cells using CYP39A1 Polyclonal Antibody

## Storage

-20°C for one year

501 Changsheng S Rd, Nanhu Dist, Jiaxing, Zhejiang, China

Tel: 86 21 31007137 | E-mail: [save@bt-laboratory.com](mailto:save@bt-laboratory.com) | [www.bt-laboratory.com](http://www.bt-laboratory.com)