

CYP4A11/22 Polyclonal Antibody

Description

Product type	Primary Antibody
Code	BT-AP02423
Host	Rabbit
Isotype	IgG
Size	20ul, 50ul, 100ul
Immunogen	The antiserum was produced against synthesized peptide derived from human Cytochrome P450 4A11/22. AA range:391-440
Mol wt	59348/59246
Species reactivity	Human
Clonality	Polyclonal
Recommended application	WB, ELISA
Concentration	1 mg/ml
Full name	CYP4A11/22 Antibody
Synonyms	CYP4A11; CYP4A2; Cytochrome P450 4A11; 20-hydroxyeicosatetraenoic acid synthase; 20-HETE synthase; CYP4AII; CYPIVA11; Cytochrome P-450HK-omega; Cytochrome P450HL-omega; Fatty acid omega-hydroxylase; L

This product is for research use only, not for use in human, therapeutic or diagnostic procedure.

Background

CYP4A11 encodes a member of the cytochrome P450 superfamily of enzymes. The cytochrome P450 proteins are monooxygenases which catalyze many reactions involved in drug metabolism and synthesis of cholesterol, steroids and other lipids. Cytochrome P450 family 4 subfamily A member 11 localizes to the endoplasmic reticulum and hydroxylates medium-chain fatty acids such as laurate and myristate. Multiple transcript variants have been found for CYP4A11.

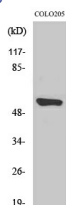
Recommended Dilution

WB: 1: 500 - 1: 2000

ELISA: 1: 40000

Not yet tested in other applications.

Images



Western Blot analysis of various cells using CYP4A11/22 Polyclonal Antibody

Storage

-20°C for one year