

CYP4F11 Polyclonal Antibody

Description

Product type	Primary Antibody
Code	BT-AP02425
Host	Rabbit
Isotype	IgG
Size	20ul, 50ul, 100ul
Immunogen	The antiserum was produced against synthesized peptide derived from human Cytochrome P450 4F11. AA range:341-390
Mol wt	60198
Species reactivity	Human
Clonality	Polyclonal
Recommended application	WB, ELISA
Concentration	1 mg/ml
Full name	CYP4F11 Antibody
Synonyms	CYP4F11; Cytochrome P450 4F11; CYP11B1

This product is for research use only, not for use in human, therapeutic or diagnostic procedure.

Background

This gene, CYP4F11 (cytochrome P450 family 4 subfamily F member 11), encodes a member of the cytochrome P450 superfamily of enzymes. The cytochrome P450 proteins are monooxygenases which catalyze many reactions involved in drug metabolism and synthesis of cholesterol, steroids and other lipids. CYP4F11 is part of a cluster of cytochrome P450 genes on chromosome 19. Another member of this family, CYP4F2, is approximately 16 kb away. Alternatively spliced transcript variants encoding the same protein have been found for CYP4F11.

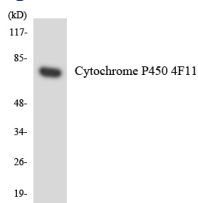
Recommended Dilution

WB: 1: 500 - 1: 2000

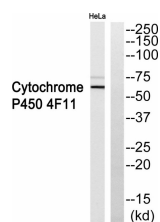
ELISA: 1: 5000

Not yet tested in other applications.

Images



Western blot analysis of the lysates from COLO205 cells using Cytochrome P450 4F11 antibody.



Western blot analysis of Cytochrome P450 4F11 Antibody. The lane on the right is blocked with the Cytochrome P450 4F11 peptide.

Storage

-20°C for one year

501 Changsheng S Rd, Nanhu Dist, Jiaxing, Zhejiang, China

Tel: 86 21 31007137 | E-mail: save@bt-laboratory.com | www.bt-laboratory.com