

CYP4F2 Polyclonal Antibody

Description

Product type	Primary Antibody
Code	BT-AP02426
Host	Rabbit
Isotype	IgG
Size	20ul, 50ul, 100ul
Immunogen	The antiserum was produced against synthesized peptide derived from human CYP4F2. AA range:41-90
Mol wt	59853
Species reactivity	Human
Clonality	Polyclonal
Recommended application	WB, IHC-p, ELISA
Concentration	1 mg/ml
Full name	CYP4F2 Antibody
Synonyms	CYP4F2; Leukotriene-B(4) omega-hydroxylase 1; CYP1VF2; Cytochrome P450 4F2; Cytochrome P450-LTB-omega; Leukotriene-B(4) 20-monoxygenase 1

This product is for research use only, not for use in human, therapeutic or diagnostic procedure.

Background

CYP4F2 encodes a member of the cytochrome P450 superfamily of enzymes. The cytochrome P450 proteins are monooxygenases which catalyze many reactions involved in drug metabolism and synthesis of cholesterol, steroids and other lipids. Cytochrome P450 family 4 subfamily F member 2 localizes to the endoplasmic reticulum. The enzyme starts the process of inactivating and degrading leukotriene B₄, a potent mediator of inflammation. This gene is part of a cluster of cytochrome P450 genes on chromosome 19. Another member of this family, CYP4F11, is approximately 16 kb away.

Recommended Dilution

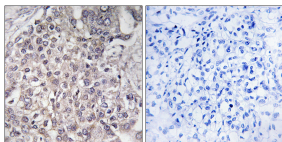
WB: 1: 500 - 1: 2000

IHC: 1: 100 - 1: 300

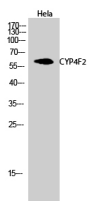
ELISA: 1: 40000

Not yet tested in other applications.

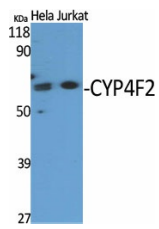
Images



Immunohistochemistry analysis of paraffin-embedded human liver carcinoma, using Cytochrome P450 4F2 Antibody. The picture on the right is blocked with the synthesized peptide.



Western Blot analysis of HeLa cells using CYP4F2 Polyclonal Antibody



Western Blot analysis of various cells using CYP4F2 Polyclonal Antibody

Storage

-20°C for one year

501 Changsheng S Rd, Nanhu Dist, Jiaxing, Zhejiang, China

Tel: 86 21 31007137 | E-mail: save@bt-laboratory.com | www.bt-laboratory.com