

CYP4X1 Polyclonal Antibody

Description

Product type	Primary Antibody
Code	BT-AP02428
Host	Rabbit
Isotype	IgG
Size	20ul, 50ul, 100ul
Immunogen	The antiserum was produced against synthesized peptide derived from human Cytochrome P450 4X1. AA range:231-280
Mol wt	58875
Species reactivity	Human
Clonality	Polyclonal
Recommended application	WB, ELISA
Concentration	1 mg/ml
Full name	CYP4X1 Antibody
Synonyms	CYP4X1; Cytochrome P450 4X1; CYP1VX1

This product is for research use only, not for use in human, therapeutic or diagnostic procedure.

Background

CYP4X1 encodes a member of the cytochrome P450 superfamily of enzymes and is located within a cluster of genes belonging to this superfamily on chromosome 1. The cytochrome P450 proteins are monooxygenases which catalyze many reactions involved in drug metabolism and synthesis of cholesterol, steroids and other lipids. The expression pattern of a similar rat protein suggests that this protein may be involved in neurovascular function in the brain. Alternative splicing results in multiple transcript variants.

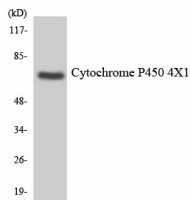
Recommended Dilution

WB: 1: 500 - 1: 2000

ELISA: 1: 10000

Not yet tested in other applications.

Images



Western blot analysis of the lysates from HeLa cells using Cytochrome P450 4X1 antibody.

Storage

-20°C for one year