

## CYP4X1 Polyclonal Antibody

### Description

<b>Product type</b>	Primary Antibody
<b>Code</b>	BT-AP02429
<b>Host</b>	Rabbit
<b>Isotype</b>	IgG
<b>Size</b>	20ul, 50ul, 100ul
<b>Immunogen</b>	The antiserum was produced against synthesized peptide derived from human Cytochrome P450 4X1. AA range:251-300
<b>Mol wt</b>	58875
<b>Species reactivity</b>	Human, Monkey
<b>Clonality</b>	Polyclonal
<b>Recommended application</b>	WB, IHC-p, ELISA
<b>Concentration</b>	1 mg/ml
<b>Full name</b>	CYP4X1 Antibody
<b>Synonyms</b>	CYP4X1; Cytochrome P450 4X1; CYP1VX1

This product is for research use only, not for use in human, therapeutic or diagnostic procedure.

### Background

CYP4X1 encodes a member of the cytochrome P450 superfamily of enzymes and is located within a cluster of genes belonging to this superfamily on chromosome 1. The cytochrome P450 proteins are monooxygenases which catalyze many reactions involved in drug metabolism and synthesis of cholesterol, steroids and other lipids. The expression pattern of a similar rat protein suggests that this protein may be involved in neurovascular function in the brain. Alternative splicing results in multiple transcript variants.

### Recommended Dilution

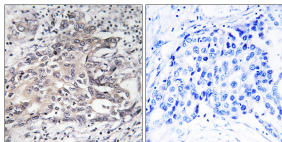
WB: 1: 500 - 1: 2000

IHC: 1: 100 - 1: 300

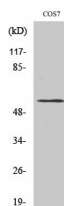
ELISA: 1: 40000

Not yet tested in other applications.

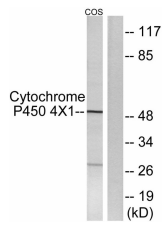
### Images



Immunohistochemistry analysis of paraffin-embedded human liver carcinoma tissue, using Cytochrome P450 4X1 Antibody. The picture on the right is blocked with the synthesized peptide.



Western Blot analysis of various cells using CYP4X1 Polyclonal Antibody



### Storage

-20°C for one year

501 Changsheng S Rd, Nanhu Dist, Jiaxing, Zhejiang, China

Tel: 86 21 31007137 | E-mail: [save@bt-laboratory.com](mailto:save@bt-laboratory.com) | [www.bt-laboratory.com](http://www.bt-laboratory.com)