

CYP4Z1 Polyclonal Antibody

Description

Product type	Primary Antibody
Code	BT-AP02430
Host	Rabbit
Isotype	IgG
Size	20ul, 50ul, 100ul
Immunogen	The antiserum was produced against synthesized peptide derived from human Cytochrome P450 4Z1. AA range:71-120
Mol wt	59086
Species reactivity	Human
Clonality	Polyclonal
Recommended application	IHC-p, IF, ELISA
Concentration	1 mg/ml
Full name	CYP4Z1 Antibody
Synonyms	CYP4Z1; Cytochrome P450 4Z1; CYP4Z1

This product is for research use only, not for use in human, therapeutic or diagnostic procedure.

Background

CYP4Z1 encodes a member of the cytochrome P450 superfamily of enzymes. The cytochrome P450 proteins are monooxygenases which catalyze many reactions involved in drug metabolism and synthesis of cholesterol, steroids and other lipids. CYP4Z1 is part of a cluster of cytochrome P450 genes on chromosome 1p33.

Recommended Dilution

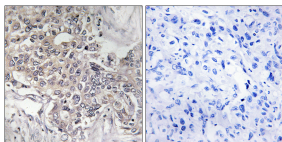
IHC: 1: 100 - 1: 300

IF: 1: 200 - 1: 1000

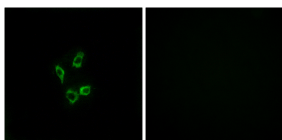
ELISA: 1: 20000

Not yet tested in other applications.

Images



Immunohistochemistry analysis of paraffin-embedded human liver carcinoma tissue, using Cytochrome P450 4Z1 Antibody. The picture on the right is blocked with the synthesized peptide.



Immunofluorescence analysis of HUVEC cells, using Cytochrome P450 4Z1 Antibody. The picture on the right is blocked with the synthesized peptide.

Storage

-20°C for one year