

CysLTR2 Polyclonal Antibody

Description

Product type	Primary Antibody
Code	BT-AP02440
Host	Rabbit
Isotype	IgG
Size	20ul, 50ul, 100ul
Immunogen	The antiserum was produced against synthesized peptide derived from human CLTR2. AA range:281-330
Mol wt	38541
Species reactivity	Human
Clonality	Polyclonal
Recommended application	WB, IF, ELISA
Concentration	1 mg/ml
Full name	CysLTR2 Antibody
Synonyms	CYSLTR2; CYSLT2; CYSLT2R; PSEC0146; Cysteinyl leukotriene receptor 2; CysLTR2; G-protein coupled receptor GPCR21; hGPCR21; G-protein coupled receptor HG57; HPN321

This product is for research use only, not for use in human, therapeutic or diagnostic procedure.

Background

CYSLTR1 encodes a member of the G-protein coupled receptor 1 family. Cysteinyl leukotriene receptor 1 is a receptor for cysteinyl leukotrienes, and is involved in mediating bronchoconstriction via activation of a phosphatidylinositol-calcium second messenger system. Activation of the encoded receptor results in contraction and proliferation of bronchial smooth muscle cells, eosinophil migration, and damage to the mucus layer in the lung. Upregulation of CYSLTR1 is associated with asthma and dysregulation may also be implicated in cancer. Alternative splicing results in multiple transcript variants.

Recommended Dilution

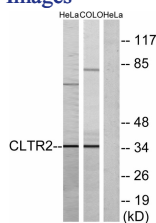
WB: 1: 500 - 1: 2000

IF: 1: 200 - 1: 1000

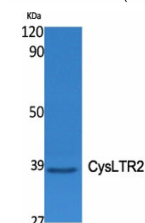
ELISA: 1: 40000

Not yet tested in other applications.

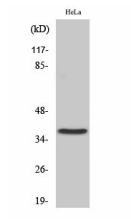
Images



Western blot analysis of lysates from HeLa and COLO cells, using CLTR2 Antibody. The lane on the right is blocked with the synthesized peptide.



Western Blot analysis of various cells using CysLTR2 Polyclonal Antibody



Western Blot analysis of HeLa cells using CysLTR2 Polyclonal Antibody

Storage

-20°C for one year

501 Changsheng S Rd, Nanhu Dist, Jiaxing, Zhejiang, China

Tel: 86 21 31007137 | E-mail: save@bt-laboratory.com | www.bt-laboratory.com