

CYTL1 Polyclonal Antibody

Description

Product type	Primary Antibody
Code	BT-AP02454
Host	Rabbit
Isotype	IgG
Size	20ul, 50ul, 100ul
Immunogen	The antiserum was produced against synthesized peptide derived from human CYTL1. AA range:61-110
Mol wt	15577
Species reactivity	Human
Clonality	Polyclonal
Recommended application	WB, IHC-p, ELISA
Concentration	1 mg/ml
Full name	CYTL1 Antibody
Synonyms	CYTL1; C4orf4; Cytokine-like protein 1; Protein C17

This product is for research use only, not for use in human, therapeutic or diagnostic procedure.

Background

C17 is a cytokine-like protein specifically expressed in bone marrow and cord blood mononuclear cells that bear the CD34 (MIM 142230) surface marker.

Recommended Dilution

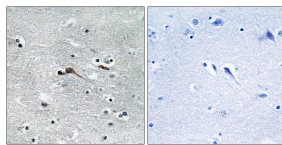
WB: 1: 500 - 1: 2000

IHC: 1: 100 - 1: 300

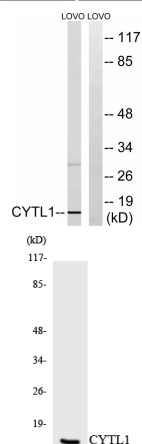
ELISA: 1: 40000

Not yet tested in other applications.

Images



Immunohistochemistry analysis of paraffin-embedded human brain tissue, using CYTL1 Antibody. The picture on the right is blocked with the synthesized peptide.



Western blot analysis of lysates from LOVO cells, using CYTL1 Antibody. The lane on the right is blocked with the synthesized peptide.

Western blot analysis of the lysates from HT-29 cells using CYTL1 antibody.

Storage

-20°C for one year

501 Changsheng S Rd, Nanhu Dist, Jiaxing, Zhejiang, China

Tel: 86 21 31007137 | E-mail: save@bt-laboratory.com | www.bt-laboratory.com