

ERP29 Rabbit Polyclonal Antibody

Description

| | |
|--------------------------------|----------------------------------------------|
| Product type | Primary Antibody |
| Code | BT-AP02455 |
| Host | Rabbit |
| Isotype | IgG |
| Size | 20ul, 50ul, 100ul |
| Immunogen | Synthesized peptide derived from human ERP29 |
| Mol wt | 28710 |
| Species reactivity | Human, Mouse, Rat |
| Clonality | Polyclonal |
| Recommended application | WB |
| Concentration | 1 mg/ml |
| Full name | ERP29 |
| Synonyms | ERP29 |

This product is for research use only, not for use in human, therapeutic or diagnostic procedure.

Background

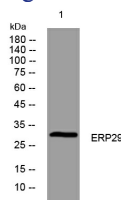
This gene encodes a reticuloplasmin| a protein which resides in the lumen of the endoplasmic reticulum (ER). The protein shows sequence similarity to the protein disulfide isomerase family. However| it lacks the thioredoxin motif characteristic of this family| suggesting that this protein does not function as a disulfide isomerase. The protein dimerizes and is thought to play a role in the processing of secretory proteins within the ER. Alternative splicing results in multiple transcript variants encoding different isoforms.

Recommended Dilution

WB: 1: 500 - 1: 2000

Not yet tested in other applications.

Images



Western blot analysis of lysates from HeLa cells, primary antibody was diluted at 1:1000, 4°C overnight

Storage

-20°C for 1 year