

Cytochrome b5 Polyclonal Antibody

Description

Product type	Primary Antibody
Code	BT-AP02456
Host	Rabbit
Isotype	IgG
Size	20ul, 50ul, 100ul
Immunogen	The antiserum was produced against synthesized peptide derived from human CYB5. AA range:61-110
Mol wt	15330
Species reactivity	Human, Mouse, Rat
Clonality	Polyclonal
Recommended application	WB, IHC-p, IF, ELISA
Concentration	1 mg/ml
Full name	Cytochrome b5 Antibody
Synonyms	CYB5A; CYB5; Cytochrome b5; Microsomal cytochrome b5 type A; MCB5

This product is for research use only, not for use in human, therapeutic or diagnostic procedure.

Background

Cytochrome b5 type A encoded by CYB5A is a membrane-bound cytochrome that reduces ferric hemoglobin (methemoglobin) to ferrous hemoglobin, which is required for stearyl-CoA-desaturase activity. Defects in CYB5A are a cause of type IV hereditary methemoglobinemia. Three transcript variants encoding different isoforms have been found for CYB5A.

Recommended Dilution

WB: 1: 500 - 1: 2000

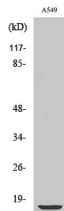
IHC: 1: 100 - 1: 300

IF: 1: 200 - 1: 1000

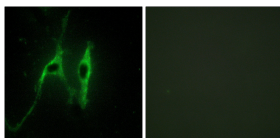
ELISA: 1: 5000

Not yet tested in other applications.

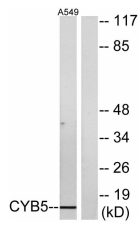
Images



Western Blot analysis of various cells using Cytochrome b5 Polyclonal Antibody



Immunofluorescence analysis of NIH/3T3 cells, using CYB5 Antibody. The picture on the right is blocked with the synthesized peptide.



Western blot analysis of lysates from A549 cells, using CYB5 Antibody. The lane on the right is blocked with the synthesized peptide.

Storage

-20°C for one year

501 Changsheng S Rd, Nanhu Dist, Jiaxing, Zhejiang, China

Tel: 86 21 31007137 | E-mail: save@bt-laboratory.com | www.bt-laboratory.com