

Cytochrome c1 Polyclonal Antibody

Description

Product type	Primary Antibody
Code	BT-AP02457
Host	Rabbit
Isotype	IgG
Size	20ul, 50ul, 100ul
Immunogen	The antiserum was produced against synthesized peptide derived from human CYC1. AA range:132-181
Mol wt	35390
Species reactivity	Human, Mouse
Clonality	Polyclonal
Recommended application	WB, ELISA
Concentration	1 mg/ml
Full name	Cytochrome c1 Antibody
Synonyms	CYC1; Cytochrome c1; heme protein, mitochondrial; Complex III subunit 4; Complex III subunit IV; Cytochrome b-c1 complex subunit 4; Ubiquinol-cytochrome-c reductase complex cytochrome c1 subunit; Cyt

This product is for research use only, not for use in human, therapeutic or diagnostic procedure.

Background

CYC1 encodes a subunit of the cytochrome bc1 complex, which plays an important role in the mitochondrial respiratory chain by transferring electrons from the Rieske iron-sulfur protein to cytochrome c. Mutations in CYC1 may cause mitochondrial complex III deficiency, nuclear type 6.

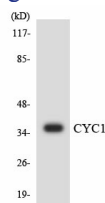
Recommended Dilution

WB: 1: 500 - 1: 2000

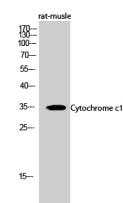
ELISA: 1: 20000

Not yet tested in other applications.

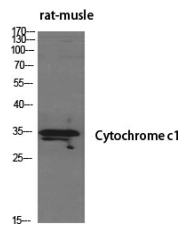
Images



Western blot analysis of the lysates from HUVEC cells using CYC1 antibody.



Western Blot analysis of rat-muscle cells using Cytochrome c1 Polyclonal Antibody diluted at 1:500



Western Blot analysis of various cells using Cytochrome c1 Polyclonal Antibody diluted at 1:500

Storage

-20°C for one year

501 Changsheng S Rd, Nanhu Dist, Jiaxing, Zhejiang, China

Tel: 86 21 31007137 | E-mail: save@bt-laboratory.com | www.bt-laboratory.com