

Cytokeratin 13 Polyclonal Antibody

Description

Product type	Primary Antibody
Code	BT-AP02460
Host	Rabbit
Isotype	IgG
Size	20ul, 50ul, 100ul
Immunogen	The antiserum was produced against synthesized peptide derived from human Cytokeratin 13. AA range:233-282
Mol wt	49586
Species reactivity	Human, Mouse, Rat
Clonality	Polyclonal
Recommended application	WB, IHC-p, ELISA
Concentration	1 mg/ml
Full name	Cytokeratin 13 Antibody
Synonyms	KRT13; Keratin; type I cytoskeletal 13; Cytokeratin-13; CK-13; Keratin-13; K13

This product is for research use only, not for use in human, therapeutic or diagnostic procedure.

Background

Keratin 13 encoded by KRT13 is a member of the keratin gene family. The keratins are intermediate filament proteins responsible for the structural integrity of epithelial cells and are subdivided into cytokeratins and hair keratins. Most of the type I cytokeratins consist of acidic proteins which are arranged in pairs of heterotypic keratin chains. This type I cytokeratin is paired with keratin 4 and expressed in the suprabasal layers of non-cornified stratified epithelia. Mutations in this gene and keratin 4 have been associated with the autosomal dominant disorder White Sponge Nevus. The type I cytokeratins are clustered in a region of chromosome 17q21.2. Alternative splicing of KRT13 results in multiple transcript variants; however, not all variants have been described.

Recommended Dilution

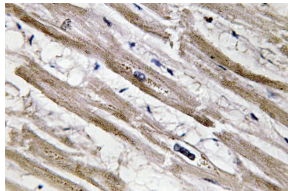
WB: 1: 500 - 1: 2000

IHC: 1: 100 - 1: 300

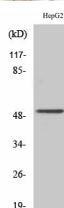
ELISA: 1: 5000

Not yet tested in other applications.

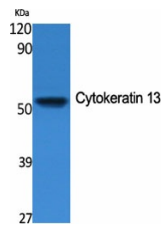
Images



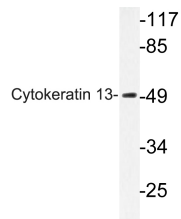
Immunohistochemistry analysis of Cytokeratin 13 antibody in paraffin-embedded human heart tissue.



Western Blot analysis of HepG2 cells using Cytokeratin 13 Polyclonal Antibody



Western Blot analysis of various cells using Cytokeratin 13 Polyclonal Antibody



Western blot analysis of lysate from HepG2 cells, using Cytokeratin 13 antibody.

Storage

-20°C for one year

501 Changsheng S Rd, Nanhu Dist, Jiaxing, Zhejiang, China

Tel: 86 21 31007137 | E-mail: save@bt-laboratory.com | www.bt-laboratory.com