

## Cytokeratin 14/16 Polyclonal Antibody

### Description

|                                |                                                                                                                                                                        |
|--------------------------------|------------------------------------------------------------------------------------------------------------------------------------------------------------------------|
| <b>Product type</b>            | Primary Antibody                                                                                                                                                       |
| <b>Code</b>                    | BT-AP02463                                                                                                                                                             |
| <b>Host</b>                    | Rabbit                                                                                                                                                                 |
| <b>Isotype</b>                 | IgG                                                                                                                                                                    |
| <b>Size</b>                    | 20ul, 50ul, 100ul                                                                                                                                                      |
| <b>Immunogen</b>               | The antiserum was produced against synthesized peptide derived from human Keratin 14. AA range:1-50                                                                    |
| <b>Mol wt</b>                  | 51622/51268                                                                                                                                                            |
| <b>Species reactivity</b>      | Human, Mouse, Rat                                                                                                                                                      |
| <b>Clonality</b>               | Polyclonal                                                                                                                                                             |
| <b>Recommended application</b> | WB, IHC-p, IF, ELISA                                                                                                                                                   |
| <b>Concentration</b>           | 1 mg/ml                                                                                                                                                                |
| <b>Full name</b>               | Cytokeratin 14/16 Antibody                                                                                                                                             |
| <b>Synonyms</b>                | KRT14; Keratin; type I cytoskeletal 14; Cytokeratin-14; CK-14; Keratin-14; K14; KRT16; KRT16A; Keratin, type I cytoskeletal 16; Cytokeratin-16; CK-16; Keratin-16; K16 |

**This product is for research use only, not for use in human, therapeutic or diagnostic procedure.**

### Background

KRT14 encodes a member of the keratin family, the most diverse group of intermediate filaments. This gene product, a type I keratin, is usually found as a heterotetramer with two keratin 5 molecules, a type II keratin. Together they form the cytoskeleton of epithelial cells. Mutations in the genes for these keratins are associated with epidermolysis bullosa simplex. At least one pseudogene has been identified at 17p12-p11.

### Recommended Dilution

WB: 1: 500 - 1: 2000

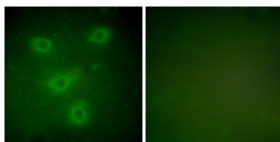
IHC: 1: 100 - 1: 300

IF: 1: 200 - 1: 1000

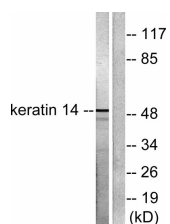
ELISA: 1: 20000

Not yet tested in other applications.

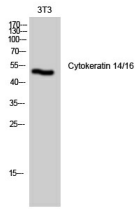
### Images



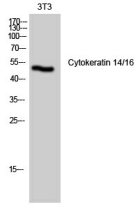
Immunofluorescence analysis of NIH/3T3 cells, using Keratin 14 Antibody. The picture on the right is blocked with the synthesized peptide.



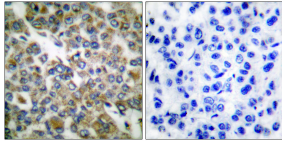
Western blot analysis of lysates from NIH/3T3 cells, using Keratin 14 Antibody. The lane on the right is blocked with the synthesized peptide.



Western Blot analysis of NIH-3T3 cells using Cytokeratin 14/16 Polyclonal Antibody diluted at 1:1000



Western Blot analysis of 3T3 cells using Cytokeratin 14/16 Polyclonal Antibody diluted at 1:1000



Immunohistochemistry analysis of paraffin-embedded human breast carcinoma tissue, using Keratin 14 Antibody. The picture on the right is blocked with the synthesized peptide.

### Storage

-20°C for one year

501 Changsheng S Rd, Nanhu Dist, Jiaxing, Zhejiang, China

Tel: 86 21 31007137 | E-mail: [save@bt-laboratory.com](mailto:save@bt-laboratory.com) | [www.bt-laboratory.com](http://www.bt-laboratory.com)