

## Cytokeratin 18 Polyclonal Antibody

### Description

<b>Product type</b>	Primary Antibody
<b>Code</b>	BT-AP02470
<b>Host</b>	Rabbit
<b>Isotype</b>	IgG
<b>Size</b>	20ul, 50ul, 100ul
<b>Immunogen</b>	The antiserum was produced against synthesized peptide derived from human Keratin 18. AA range:381-430
<b>Mol wt</b>	47927
<b>Species reactivity</b>	Human, Mouse, Rat
<b>Clonality</b>	Polyclonal
<b>Recommended application</b>	WB, IHC-p, IF, ELISA
<b>Concentration</b>	1 mg/ml
<b>Full name</b>	Cytokeratin 18 Antibody
<b>Synonyms</b>	KRT18; CYK18; PIG46; Keratin; type I cytoskeletal 18; Cell proliferation-inducing gene 46 protein; Cytokeratin-18; CK-18; Keratin-18; K18

**This product is for research use only, not for use in human, therapeutic or diagnostic procedure.**

### Background

KRT18 encodes the type I intermediate filament chain keratin 18. Keratin 18, together with its filament partner keratin 8, are perhaps the most commonly found members of the intermediate filament gene family. They are expressed in single layer epithelial tissues of the body. Mutations in this gene have been linked to cryptogenic cirrhosis. Two transcript variants encoding the same protein have been found for KRT18.

### Recommended Dilution

WB: 1: 500 - 1: 2000

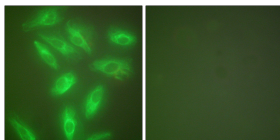
IHC: 1: 100 - 1: 300

IF: 1: 200 - 1: 1000

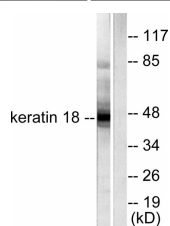
ELISA: 1: 10000

Not yet tested in other applications.

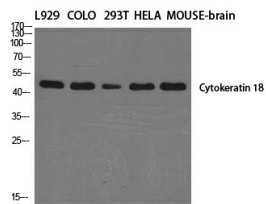
### Images



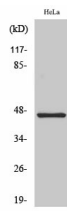
Immunofluorescence analysis of HeLa cells, using Keratin 18 Antibody. The picture on the right is blocked with the synthesized peptide.



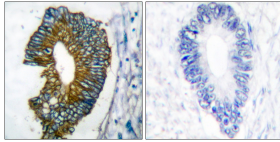
Western blot analysis of lysates from HeLa cells, using Keratin 18 Antibody. The lane on the right is blocked with the synthesized peptide.



Western Blot analysis of various cells using Cytokeratin 18 Polyclonal Antibody diluted at 1:2000



Western Blot analysis of HeLa cells using Cytokeratin 18 Polyclonal Antibody diluted at 1:2000



Immunohistochemistry analysis of paraffin-embedded human lung carcinoma tissue, using Keratin 18 Antibody. The picture on the right is blocked with the synthesized peptide.

### Storage

-20°C for one year

501 Changsheng S Rd, Nanhu Dist, Jiaxing, Zhejiang, China

Tel: 86 21 31007137 | E-mail: [save@bt-laboratory.com](mailto:save@bt-laboratory.com) | [www.bt-laboratory.com](http://www.bt-laboratory.com)