

Cytokeratin 19 Polyclonal Antibody

Description

Product type	Primary Antibody
Code	BT-AP02472
Host	Rabbit
Isotype	IgG
Size	20ul, 50ul, 100ul
Immunogen	The antiserum was produced against synthesized peptide derived from the C-terminal region of human KRT19. AA range:321-370
Mol wt	44092/59511/53511
Species reactivity	Human
Clonality	Polyclonal
Recommended application	WB, IHC-p, ELISA
Concentration	1 mg/ml
Full name	Cytokeratin 19 Antibody
Synonyms	KRT19; Keratin, type I cytoskeletal 19; Cytokeratin-19; CK-19; Keratin-19; K19

This product is for research use only, not for use in human, therapeutic or diagnostic procedure.

Background

Keratin type I cytoskeletal 19 encoded by KRT19 is a member of the keratin family. The keratins are intermediate filament proteins responsible for the structural integrity of epithelial cells and are subdivided into cytokeratins and hair keratins. The type I cytokeratins consist of acidic proteins which are arranged in pairs of heterotypic keratin chains. Unlike its related family members, this smallest known acidic cytokeratin is not paired with a basic cytokeratin in epithelial cells. It is specifically expressed in the periderm, the transiently superficial layer that envelopes the developing epidermis. The type I cytokeratins are clustered in a region of chromosome 17q12-q21.

Recommended Dilution

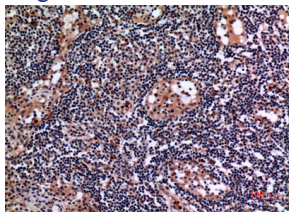
WB: 1: 500 - 1: 2000

IHC-p: 1: 100 - 1: 300

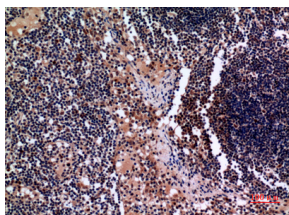
ELISA: 1: 20000

Not yet tested in other applications.

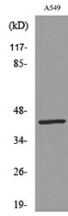
Images



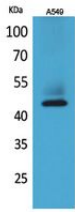
Immunohistochemical analysis of paraffin-embedded human-lymph-gland, antibody was diluted at 1:100



Immunohistochemical analysis of paraffin-embedded human-lymph-gland, antibody was diluted at 1:100



Western blot analysis of lysate from A549 cells, using KRT19 Antibody.



Western Blot analysis of A549 cells using Cytokeratin 19 Polyclonal Antibody. Secondary antibody was diluted at 1:20000

Storage

-20°C for one year

501 Changsheng S Rd, Nanhu Dist, Jiaxing, Zhejiang, China

Tel: 86 21 31007137 | E-mail: save@bt-laboratory.com | www.bt-laboratory.com