

Cytokeratin 7 Polyclonal Antibody

Description

Product type	Primary Antibody
Code	BT-AP02475
Host	Rabbit
Isotype	IgG
Size	20ul, 50ul, 100ul
Immunogen	The antiserum was produced against synthesized peptide derived from human Keratin 7. AA range:420-469
Mol wt	51418
Species reactivity	Human
Clonality	Polyclonal
Recommended application	WB, IHC-p, IF, ELISA
Concentration	1 mg/ml
Full name	Cytokeratin 7 Antibody
Synonyms	KRT7; SCL; Keratin; type II cytoskeletal 7; Cytokeratin-7; CK-7; Keratin-7; K7; Sarcolectin; Type-II keratin Kb7

This product is for research use only, not for use in human, therapeutic or diagnostic procedure.

Background

Keratin 7 encoded by KRT7 is a member of the keratin gene family. The type II cytokeratins consist of basic or neutral proteins which are arranged in pairs of heterotypic keratin chains coexpressed during differentiation of simple and stratified epithelial tissues. This type II cytokeratin is specifically expressed in the simple epithelia lining the cavities of the internal organs and in the gland ducts and blood vessels. The genes encoding the type II cytokeratins are clustered in a region of chromosome 12q12-q13. Alternative splicing may result in several transcript variants; however, not all variants have been fully described.

Recommended Dilution

WB: 1: 500 - 1: 2000

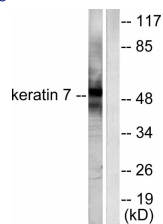
IHC: 1: 100 - 1: 300

IF: 1: 200 - 1: 1000

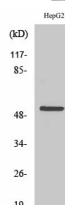
ELISA: 1: 40000

Not yet tested in other applications.

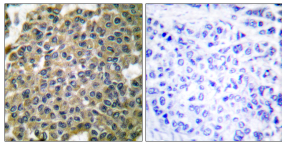
Images



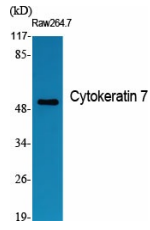
Western blot analysis of lysates from HepG2 cells, using Keratin 7 Antibody. The lane on the right is blocked with the synthesized peptide.



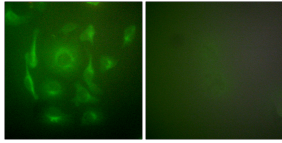
Western Blot analysis of HepG2 cells using Cytokeratin 7 Polyclonal Antibody diluted at 1:1000



Immunohistochemistry analysis of paraffin-embedded human breast carcinoma tissue, using Keratin 7 Antibody. The picture on the right is blocked with the synthesized peptide.



Western Blot analysis of various cells using Cytokeratin 7 Polyclonal Antibody diluted at 1:1000



Immunofluorescence analysis of HepG2 cells, using Keratin 7 Antibody. The picture on the right is blocked with the synthesized peptide.

Storage

-20°C for one year

501 Changsheng S Rd, Nanhu Dist, Jiaxing, Zhejiang, China

Tel: 86 21 31007137 | E-mail: save@bt-laboratory.com | www.bt-laboratory.com