

Cytokeratin 8 Polyclonal Antibody

Description

Product type	Primary Antibody
Code	BT-AP02477
Host	Rabbit
Isotype	IgG
Size	20ul, 50ul, 100ul
Immunogen	The antiserum was produced against synthesized peptide derived from human K8 around the non-acetylation site of Lys483. AA range:434-483
Mol wt	53573
Species reactivity	Human
Clonality	Polyclonal
Recommended application	WB, IHC-p, ELISA
Concentration	1 mg/ml
Full name	Cytokeratin 8 Antibody
Synonyms	KRT8; CYK8; Keratin, type II cytoskeletal 8; Cytokeratin-8; CK-8; Keratin-8; K8; Type-II keratin Kb8

This product is for research use only, not for use in human, therapeutic or diagnostic procedure.

Background

KRT8 is a member of the type II keratin family clustered on the long arm of chromosome 12. Type I and type II keratins heteropolymerize to form intermediate-sized filaments in the cytoplasm of epithelial cells. The product of this gene typically dimerizes with keratin 18 to form an intermediate filament in simple single-layered epithelial cells. This protein plays a role in maintaining cellular structural integrity and also functions in signal transduction and cellular differentiation. Mutations in this gene cause cryptogenic cirrhosis. Alternatively spliced transcript variants have been found for this gene.

Recommended Dilution

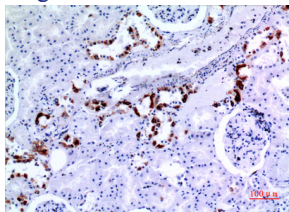
WB: 1: 500 - 1: 2000

IHC-p: 1: 100 - 1: 300

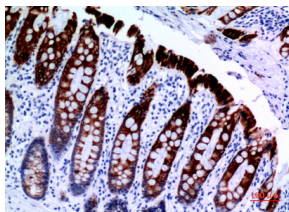
ELISA: 1: 20000

Not yet tested in other applications.

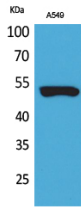
Images



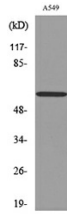
Immunohistochemical analysis of paraffin-embedded human-kidney, antibody was diluted at 1:100



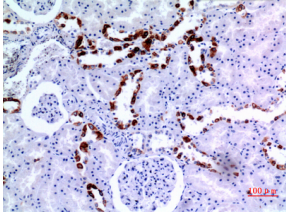
Immunohistochemical analysis of paraffin-embedded human-colon, antibody was diluted at 1:100



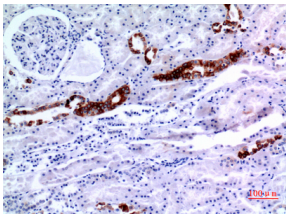
Western Blot analysis of A549 cells using Cytokeratin 8 Polyclonal Antibody. Secondary antibody was diluted at 1:20000



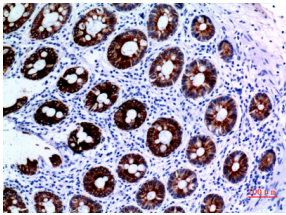
Western blot analysis of extracts from A549 cells, using K8 (Ab-483) Antibody.



Immunohistochemical analysis of paraffin-embedded human-kidney, antibody was diluted at 1:100



Immunohistochemical analysis of paraffin-embedded human-kidney, antibody was diluted at 1:100



Immunohistochemical analysis of paraffin-embedded human-colon, antibody was diluted at 1:100

Storage

-20°C for one year

501 Changsheng S Rd, Nanhu Dist, Jiaxing, Zhejiang, China

Tel: 86 21 31007137 | E-mail: save@bt-laboratory.com | www.bt-laboratory.com