

D3DR Polyclonal Antibody

Description

Product type	Primary Antibody
Code	BT-AP02486
Host	Rabbit
Isotype	IgG
Size	20ul, 50ul, 100ul
Immunogen	Synthesized peptide derived from D3DR . at AA range: 181-230
Mol wt	44225
Species reactivity	Human, Mouse, Rat
Clonality	Polyclonal
Recommended application	WB, ELISA
Concentration	1 mg/ml
Full name	D3DR Antibody
Synonyms	DRD3; D(3) dopamine receptor; Dopamine D3 receptor

This product is for research use only, not for use in human, therapeutic or diagnostic procedure.

Background

DRD3 encodes the D3 subtype of the five (D1-D5) dopamine receptors. The activity of the D3 subtype receptor is mediated by G proteins which inhibit adenylyl cyclase. This receptor is localized to the limbic areas of the brain, which are associated with cognitive, emotional, and endocrine functions. Genetic variation in this gene may be associated with susceptibility to hereditary essential tremor 1. Alternative splicing of this gene results in transcript variants encoding different isoforms, although some variants may be subject to nonsense-mediated decay (NMD).

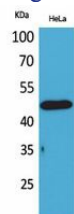
Recommended Dilution

WB: 1: 500 - 1: 2000

ELISA: 1: 20000

Not yet tested in other applications.

Images



Western Blot analysis of HeLa cells using D3DR Polyclonal Antibody. Secondary antibody was diluted at 1:20000

Storage

-20°C for one year