

Dab1 Polyclonal Antibody

Description

Product type	Primary Antibody
Code	BT-AP02492
Host	Rabbit
Isotype	IgG
Size	20ul, 50ul, 100ul
Immunogen	The antiserum was produced against synthesized peptide derived from human Dab1. AA range:199-248
Mol wt	59979
Species reactivity	Human, Mouse, Rat
Clonality	Polyclonal
Recommended application	WB, IF, ELISA
Concentration	1 mg/ml
Full name	Dab1 Antibody
Synonyms	DAB1; Disabled homolog 1

This product is for research use only, not for use in human, therapeutic or diagnostic procedure.

Background

The laminar organization of multiple neuronal types in the cerebral cortex is required for normal cognitive function. In mice, the disabled-1 gene plays a central role in brain development, directing the migration of cortical neurons past previously formed neurons to reach their proper layer. DAB1 is similar to disabled-1, and the protein encoded by DAB1 is thought to be a signal transducer that interacts with protein kinase pathways to regulate neuronal positioning in the developing brain. Alternatively spliced transcript variants of DAB1 have been reported, but their full length nature has not been determined.

Recommended Dilution

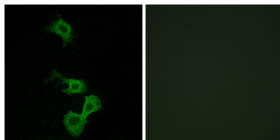
WB: 1: 500 - 1: 2000

IF: 1: 200 - 1: 1000

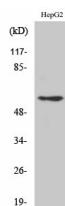
ELISA: 1: 20000

Not yet tested in other applications.

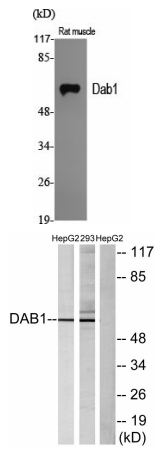
Images



Immunofluorescence analysis of MCF7 cells, using Dab1 Antibody. The picture on the right is blocked with the synthesized peptide.



Western Blot analysis of 293 cells using Dab1 Polyclonal Antibody



Western Blot analysis of various cells using Dab1 Polyclonal Antibody

Western blot analysis of lysates from HepG2 and 293 cells, using Dab1 Antibody. The lane on the right is blocked with the synthesized peptide.

Storage

-20°C for one year

501 Changsheng S Rd, Nanhu Dist, Jiaxing, Zhejiang, China

Tel: 86 21 31007137 | E-mail: save@bt-laboratory.com | www.bt-laboratory.com