

## DACA-1 Polyclonal Antibody

### Description

<b>Product type</b>	Primary Antibody
<b>Code</b>	BT-AP02493
<b>Host</b>	Rabbit
<b>Isotype</b>	IgG
<b>Size</b>	20ul, 50ul, 100ul
<b>Immunogen</b>	The antiserum was produced against synthesized peptide derived from human YTHDF1. AA range:1-50
<b>Mol wt</b>	60874
<b>Species reactivity</b>	Human, Mouse, Rat
<b>Clonality</b>	Polyclonal
<b>Recommended application</b>	WB, IHC-p, ELISA
<b>Concentration</b>	1 mg/ml
<b>Full name</b>	DACA-1 Antibody
<b>Synonyms</b>	YTHDF1; C20orf21; YTH domain family protein 1; Dermatomyositis associated with cancer putative autoantigen 1; DACA-1

**This product is for research use only, not for use in human, therapeutic or diagnostic procedure.**

### Background

The YTH domain family protein family (YTHDF) includes YTHDF1, YTHDF2 and TYHDF3. YTHDF1, also designated Dermatomyositis associated with cancer putative autoantigen 1 (DACA-1), is a 559 amino acid protein that contains one YTH domain, which is a potential RNA binding domain. YTHDF2, also designated High-glucose-regulated protein 8, CLL-associated antigen KW-14 or Renal carcinoma antigen NY-REN-2, is a 579 amino acid protein that also contains one YTH domain. YTHDF3 is a 585 amino acid protein that also contains one YTH domain. The gene encoding YTHDF1 maps to chromosome 20, which houses over 600 genes, some of which are associated with Creutzfeldt-Jakob disease, amyotrophic lateral sclerosis, spinal muscular atrophy, ring chromosome 20 epilepsy syndrome and Alagille syndrome. Additionally, chromosome 20 contains a region with numerous genes which are thought important for seminal production and may be potential targets for male contraception.

### Recommended Dilution

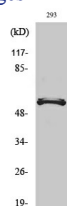
WB: 1: 500 - 1: 2000

IHC: 1: 100 - 1: 300

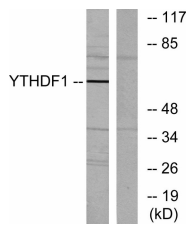
ELISA: 1: 5000

Not yet tested in other applications.

### Images



Western Blot analysis of various cells using DACA-1 Polyclonal Antibody



Western blot analysis of lysates from 293 cells, using YTHDF1 Antibody. The lane on the right is blocked with the synthesized peptide.

### Storage

-20°C for one year

501 Changsheng S Rd, Nanhu Dist, Jiaxing, Zhejiang, China

Tel: 86 21 31007137 | E-mail: [save@bt-laboratory.com](mailto:save@bt-laboratory.com) | [www.bt-laboratory.com](http://www.bt-laboratory.com)