

DAP-5 Polyclonal Antibody

Description

Product type	Primary Antibody
Code	BT-AP02497
Host	Rabbit
Isotype	IgG
Size	20ul, 50ul, 100ul
Immunogen	The antiserum was produced against synthesized peptide derived from human EIF4G2. AA range:41-90
Mol wt	102362
Species reactivity	Human, Mouse
Clonality	Polyclonal
Recommended application	WB, IHC-p, IF, ELISA
Concentration	1 mg/ml
Full name	DAP-5 Antibody
Synonyms	EIF4G2; DAP5; OK/SW-cl.75; Eukaryotic translation initiation factor 4 gamma 2; eIF-4-gamma 2; eIF-4G 2; eIF4G 2; Death-associated protein 5; DAP-5; p97

This product is for research use only, not for use in human, therapeutic or diagnostic procedure.

Background

Translation initiation is mediated by specific recognition of the cap structure by eukaryotic translation initiation factor 4F (eIF4F), which is a cap binding protein complex that consists of three subunits: eIF4A, eIF4E and eIF4G. Eukaryotic translation initiation factor 4 gamma 2 encoded by EIF4G2 shares similarity with the C-terminal region of eIF4G that contains the binding sites for eIF4A and eIF3; eIF4G, in addition, contains a binding site for eIF4E at the N-terminus. Unlike eIF4G, which supports cap-dependent and independent translation, EIF4G2 product functions as a general repressor of translation by forming translationally inactive complexes. In vitro and in vivo studies indicate that translation of this mRNA initiates exclusively at a non-AUG (GUG) codon. Alternatively spliced transcript variants encoding different isoforms of EIF4G2 have been described.

Recommended Dilution

WB: 1: 500 - 1: 2000

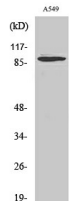
IHC: 1: 100 - 1: 300

IF: 1: 200 - 1: 1000

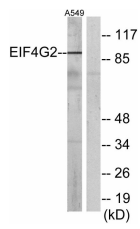
ELISA: 1: 20000

Not yet tested in other applications.

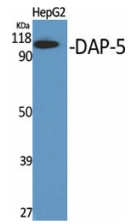
Images



Western Blot analysis of A549 cells using DAP-5 Polyclonal Antibody



Western blot analysis of lysates from A549 cells, using EIF4G2 Antibody. The lane on the right is blocked with the synthesized peptide.



Western Blot analysis of various cells using DAP-5 Polyclonal Antibody

Storage

-20°C for one year

501 Changsheng S Rd, Nanhu Dist, Jiaxing, Zhejiang, China

Tel: 86 21 31007137 | E-mail: save@bt-laboratory.com | www.bt-laboratory.com