

DARPP-32 Polyclonal Antibody

Description

Product type	Primary Antibody
Code	BT-AP02502
Host	Rabbit
Isotype	IgG
Size	20ul, 50ul, 100ul
Immunogen	The antiserum was produced against synthesized peptide derived from human DARPP-32. AA range:18-67
Mol wt	22963
Species reactivity	Human, Mouse, Rat, Monkey
Clonality	Polyclonal
Recommended application	WB, IHC-p, ELISA
Concentration	1 mg/ml
Full name	DARPP-32 Antibody
Synonyms	PPP1R1B; DARPP32; Protein phosphatase 1 regulatory subunit 1B; DARPP-32; Dopamine- and cAMP-regulated neuronal phosphoprotein

This product is for research use only, not for use in human, therapeutic or diagnostic procedure.

Background

PPP1R1B encodes a bifunctional signal transduction molecule. Dopaminergic and glutamatergic receptor stimulation regulates its phosphorylation and function as a kinase or phosphatase inhibitor. As a target for dopamine, PPP1R1B may serve as a therapeutic target for neurologic and psychiatric disorders. Multiple transcript variants encoding different isoforms have been found for PPP1R1B.

Recommended Dilution

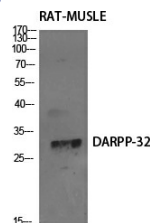
WB: 1: 500 - 1: 2000

IHC: 1: 100 - 1: 300

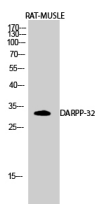
ELISA: 1: 20000

Not yet tested in other applications.

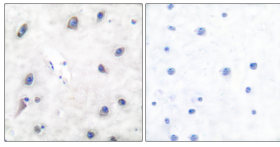
Images



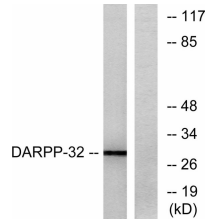
Western Blot analysis of various cells using DARPP-32 Polyclonal Antibody diluted at 1:500



Western Blot analysis of RAT-MUSCLE cells using DARPP-32 Polyclonal Antibody diluted at 1:500



Immunohistochemistry analysis of paraffin-embedded human brain tissue, using DARPP-32 Antibody. The picture on the right is blocked with the synthesized peptide.



Western blot analysis of lysates from COS7 cells, treated with forskolin 40nM 30', using DARPP-32 Antibody. The lane on the right is blocked with the synthesized peptide.

Storage

-20°C for one year

501 Changsheng S Rd, Nanhu Dist, Jiaxing, Zhejiang, China

Tel: 86 21 31007137 | E-mail: save@bt-laboratory.com | www.bt-laboratory.com