

Dbf4 Polyclonal Antibody

Description

Product type	Primary Antibody
Code	BT-AP02506
Host	Rabbit
Isotype	IgG
Size	20ul, 50ul, 100ul
Immunogen	The antiserum was produced against synthesized peptide derived from human DBF4. AA range:10-59
Mol wt	76858
Species reactivity	Human, Mouse, Monkey
Clonality	Polyclonal
Recommended application	WB, IHC-p, ELISA
Concentration	1 mg/ml
Full name	Dbf4 Antibody
Synonyms	DBF4; ASK; DBF4A; ZDBF1; Protein DBF4 homolog A; Activator of S phase kinase; Chiffon homolog A; DBF4-type zinc finger-containing protein 1

This product is for research use only, not for use in human, therapeutic or diagnostic procedure.

Background

The Dbf4/Cdc7 protein kinase is essential for the activation of replication origins during S phase. Cdc7-Dbf4 efficiently phosphorylates several proteins that are required for the initiation of DNA replication, including five of the six minichromosome maintenance (Mcm) proteins and the p180 subunit of DNA polymerase α -primase. This protein complex consists of the catalytic subunit Cdc7 associating with the regulatory and activating subunit Dbf4, and the kinase activity of the complex is regulated throughout the cell cycle mainly by fluctuating levels of Dbf4. Cdc7 is consistently expressed throughout the cell cycle, while the expression of Dbf4 is absent during G1 phase and accumulates during S and G2 phases. The anaphase-promoting complex rapidly degrades Dbf4 at the time of chromosome segregation, and the stability of Dbf4 remains low during pre-Start G1 phase. The coordinated degradation of Dbf4 and the time of chromosomes separation is important to ensuring that prereplicative complexes, which assemble after chromosome segregation, do not immediately re-fire.

Recommended Dilution

WB: 1: 500 - 1: 2000

IHC: 1: 100 - 1: 300

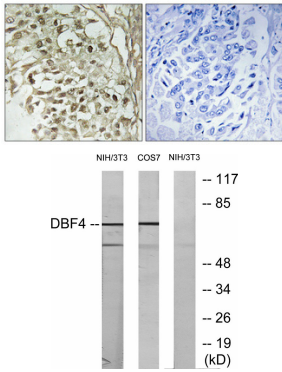
ELISA: 1: 10000

Not yet tested in other applications.

Images



Western Blot analysis of various cells using Dbf4 Polyclonal Antibody cells nucleus.



Immunohistochemical analysis of paraffin-embedded Human breast cancer. Antibody was diluted at 1:100(4° overnight). High-pressure and temperature Tris-EDTA,pH8.0 was used for antigen retrieval. Negetive contrl (right) obtaned from antibody was pre-absorbed by immunogen peptide.

Western blot analysis of lysates from NIH/3T3 cells, treated with H₂O₂ 100uM 30', COS7 treated with PMA 125ng/ml 30',using DBF4 Antibody. The lane on the right is blocked with the synthesized peptide.

Storage

-20°C for one year

501 Changsheng S Rd, Nanhu Dist, Jiaxing, Zhejiang, China

Tel: 86 21 31007137 | E-mail: save@bt-laboratory.com | www.bt-laboratory.com