

DBH Polyclonal Antibody

Description

Product type	Primary Antibody
Code	BT-AP02507
Host	Rabbit
Isotype	IgG
Size	20ul, 50ul, 100ul
Immunogen	The antiserum was produced against synthesized peptide derived from human DBH. AA range:401-450
Mol wt	69065
Species reactivity	Human
Clonality	Polyclonal
Recommended application	WB, ELISA
Concentration	1 mg/ml
Full name	DBH Antibody
Synonyms	DBH; Dopamine beta-hydroxylase; Dopamine beta-monoxygenase

This product is for research use only, not for use in human, therapeutic or diagnostic procedure.

Background

Dopamine beta-hydroxylase encoded by DBH is an oxidoreductase belonging to the copper type II, ascorbate-dependent monooxygenase family. It is present in the synaptic vesicles of postganglionic sympathetic neurons and converts dopamine to norepinephrine. It exists in both soluble and membrane-bound forms, depending on the absence or presence, respectively, of a signal peptide.

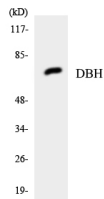
Recommended Dilution

WB: 1: 500 - 1: 2000

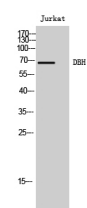
ELISA: 1: 10000

Not yet tested in other applications.

Images



Western blot analysis of the lysates from Jurkat cells using DBH antibody.



Western Blot analysis of Jurkat cells using DBH Polyclonal Antibody

Storage

-20°C for one year

