

DCAMKL3 Polyclonal Antibody

Description

Product type	Primary Antibody
Code	BT-AP02516
Host	Rabbit
Isotype	IgG
Size	20ul, 50ul, 100ul
Immunogen	The antiserum was produced against synthesized peptide derived from human DCLK3. AA range:291-340
Mol wt	73814
Species reactivity	Human
Clonality	Polyclonal
Recommended application	WB, IHC-p, ELISA
Concentration	1 mg/ml
Full name	DCAMKL3 Antibody
Synonyms	DCLK3; DCAMKL3; DCDC3C; KIAA1765; Serine/threonine-protein kinase DCLK3; Doublecortin domain-containing protein 3C; Doublecortin-like and CAM kinase-like 3; Doublecortin-like kinase 3

This product is for research use only, not for use in human, therapeutic or diagnostic procedure.

Background

The phosphorylation and dephosphorylation of proteins on serine and threonine residues is an essential means of regulating a broad range of cellular functions in eukaryotes, including cell division, homeostasis and apoptosis. A group of proteins that are intimately involved in this process are the serine/threonine (Ser/Thr) protein kinases. DCAMKL3 (doublecortin-like and CAM kinase-like 3), also known as DCLK3 or DCDC3C, is a 648 amino acid protein that localizes to both the nucleus and the cytoplasm and contains one protein kinase domain. One of several members of the Ser/Thr protein kinase family, DCAMKL3 functions to catalyze the ATP-dependent attachment of a phospho residue to target proteins, an event that may play a role in various cellular processes.

Recommended Dilution

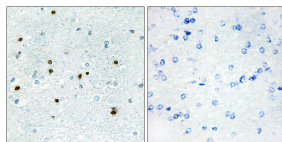
WB: 1: 500 - 1: 2000

IHC: 1: 100 - 1: 300

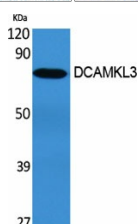
ELISA: 1: 5000

Not yet tested in other applications.

Images

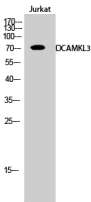


Immunohistochemistry analysis of paraffin-embedded human brain, using DCLK3 Antibody. The picture on the right is blocked with the synthesized peptide.



Western Blot analysis of various cells using DCAMKL3 Polyclonal Antibody

Western Blot analysis of Jurkat cells using DCAMKL3 Polyclonal Antibody



Storage

-20°C for one year

501 Changsheng S Rd, Nanhu Dist, Jiaxing, Zhejiang, China
Tel: 86 21 31007137 | E-mail: save@bt-laboratory.com | www.bt-laboratory.com