

## DCI Polyclonal Antibody

### Description

Product type	Primary Antibody
Code	BT-AP02518
Host	Rabbit
Isotype	IgG
Size	20ul, 50ul, 100ul
Immunogen	Synthesized peptide derived from DCI . at AA range: c-terminal
Mol wt	33220
Species reactivity	Human
Clonality	Polyclonal
Recommended application	WB, IHC-p, ELISA
Concentration	1 mg/ml
Full name	DCI Antibody
Synonyms	ECI1; DCI; Enoyl-CoA delta isomerase 1, mitochondrial; 3,2-trans-enoyl-CoA isomerase; Delta(3),Delta(2)-enoyl-CoA isomerase; D3,D2-enoyl-CoA isomerase; Dodecenoyl-CoA isomerase

**This product is for research use only, not for use in human, therapeutic or diagnostic procedure.**

### Background

ECI1 encodes a member of the hydratase/isomerase superfamily. Enoyl-CoA delta isomerase 1 mitochondrial encoded is a key mitochondrial enzyme involved in beta-oxidation of unsaturated fatty acids. It catalyzes the transformation of 3-cis and 3-trans-enoyl-CoA esters arising during the stepwise degradation of cis-, mono-, and polyunsaturated fatty acids to the 2-trans-enoyl-CoA intermediates. Alternatively spliced transcript variants have been described.

### Recommended Dilution

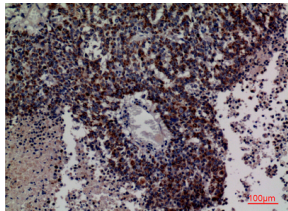
WB: 1: 500 - 1: 2000

IHC-p: 1: 100 - 300

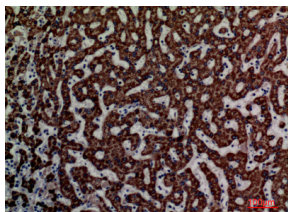
ELISA: 1: 20000

Not yet tested in other applications.

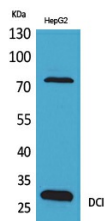
### Images



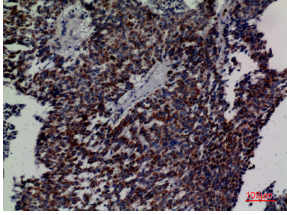
Immunohistochemical analysis of paraffin-embedded human-lung-cancer, antibody was diluted at 1:100



Immunohistochemical analysis of paraffin-embedded human-liver, antibody was diluted at 1:100



Western Blot analysis of HepG2 cells using DCI Polyclonal Antibody. Secondary antibody was diluted at 1:20000



Immunohistochemical analysis of paraffin-embedded human-lung-cancer, antibody was diluted at 1:100

### Storage

-20°C for one year

501 Changsheng S Rd, Nanhu Dist, Jiaxing, Zhejiang, China

Tel: 86 21 31007137 | E-mail: [save@bt-laboratory.com](mailto:save@bt-laboratory.com) | [www.bt-laboratory.com](http://www.bt-laboratory.com)