

DCL-1 Polyclonal Antibody

Description

Product type	Primary Antibody
Code	BT-AP02519
Host	Rabbit
Isotype	IgG
Size	20ul, 50ul, 100ul
Immunogen	The antiserum was produced against synthesized peptide derived from human CD302. AA range:51-100
Mol wt	26183
Species reactivity	Human, Mouse, Rat
Clonality	Polyclonal
Recommended application	WB, IHC-p, ELISA
Concentration	1 mg/ml
Full name	DCL-1 Antibody
Synonyms	CD302; CLEC13A; DCL1; KIAA0022; CD302 antigen; C-type lectin BIMLEC; C-type lectin domain family 13 member A; DEC205-associated C-type lectin 1; Type I transmembrane C-type lectin receptor DCL-1; CD a

This product is for research use only, not for use in human, therapeutic or diagnostic procedure.

Background

CD302 (CD302 molecule) is a C-type lectin receptor involved in cell adhesion and migration, as well as endocytosis and phagocytosis.

Recommended Dilution

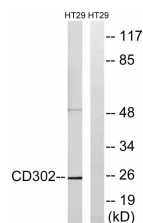
WB: 1: 500 - 1: 2000

IHC: 1: 100 - 1: 300

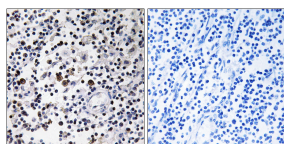
ELISA: 1: 40000

Not yet tested in other applications.

Images



Western blot analysis of lysates from HT-29 cells, using CD302 Antibody. The lane on the right is blocked with the synthesized peptide.



Immunohistochemistry analysis of paraffin-embedded human lymph node tissue, using CD302 Antibody. The picture on the right is blocked with the synthesized peptide.

Storage

-20°C for one year