

DCL-1 Polyclonal Antibody

Description

Product type	Primary Antibody
Code	BT-AP02520
Host	Rabbit
Isotype	IgG
Size	20ul, 50ul, 100ul
Immunogen	The antiserum was produced against synthesized peptide derived from the Internal region of human CD302. AA range:81-130
Mol wt	26183
Species reactivity	Human
Clonality	Polyclonal
Recommended application	WB, ELISA
Concentration	1 mg/ml
Full name	DCL-1 Antibody
Synonyms	CD302; CLEC13A; DCL1; KIAA0022; CD302 antigen; C-type lectin BIMLEC; C-type lectin domain family 13 member A; DEC205-associated C-type lectin 1; Type I transmembrane C-type lectin receptor DCL-1; CD30

This product is for research use only, not for use in human, therapeutic or diagnostic procedure.

Background

CD302 is a C-type lectin receptor involved in cell adhesion and migration, as well as endocytosis and phagocytosis (Kato et al. 2007 [PubMed: 17947679]).

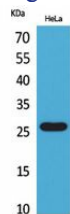
Recommended Dilution

WB: 1: 500 - 1: 2000

ELISA: 1: 20000

Not yet tested in other applications.

Images



Western Blot analysis of HeLa cells using DCL-1 Polyclonal Antibody. Secondary antibody was diluted at 1:20000

Storage

-20°C for one year