

DcR3 Polyclonal Antibody

Description

Product type	Primary Antibody
Code	BT-AP02525
Host	Rabbit
Isotype	IgG
Size	20ul, 50ul, 100ul
Immunogen	The antiserum was produced against synthesized peptide derived from human TNFRSF6B. AA range:251-300
Mol wt	32680
Species reactivity	Human
Clonality	Polyclonal
Recommended application	WB, IHC-p, IF, ELISA
Concentration	1 mg/ml
Full name	DcR3 Antibody
Synonyms	TNFRSF6B; DCR3; TR6; Tumor necrosis factor receptor superfamily member 6B; Decoy receptor 3; DcR3; Decoy receptor for Fas ligand; M68

This product is for research use only, not for use in human, therapeutic or diagnostic procedure.

Background

TNFRSF6B belongs to the tumor necrosis factor receptor superfamily. TNF receptor superfamily member 6b is postulated to play a regulatory role in suppressing FasL- and LIGHT-mediated cell death. It acts as a decoy receptor that competes with death receptors for ligand binding. Over-expression of this gene has been noted in gastrointestinal tract tumors. Read-through transcription into this gene from the neighboring upstream gene, which encodes regulator of telomere elongation helicase 1 (RTEL1), generates a non-coding transcript.

Recommended Dilution

WB: 1: 500 - 1: 2000

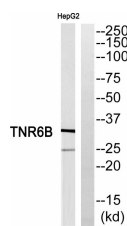
IHC: 1: 100 - 1: 300

IF: 1: 200 - 1: 1000

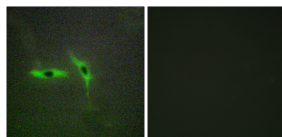
ELISA: 1: 5000

Not yet tested in other applications.

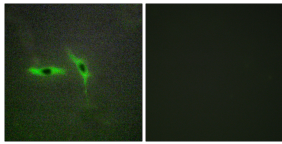
Images



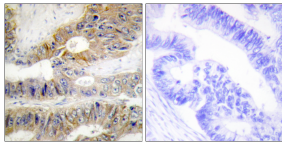
Western blot analysis of TNFRSF6B Antibody. The lane on the right is blocked with the TNFRSF6B peptide.



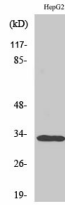
Immunofluorescence analysis of TNFRSF6B Antibody. The lane on the right is blocked with the TNFRSF6B peptide.



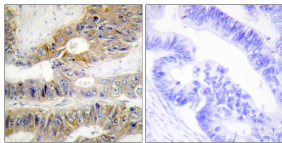
Immunofluorescence analysis of HepG2 cells, using TNFRSF6B Antibody. The picture on the right is blocked with the synthesized peptide.



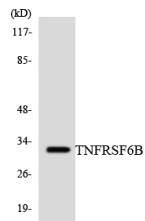
Immunohistochemistry analysis of paraffin-embedded human colon carcinoma, using TNFRSF6B Antibody. The lane on the right is blocked with the TNFRSF6B peptide.



Western Blot analysis of various cells using DeR3 Polyclonal Antibody cells nucleus.



Immunohistochemistry analysis of paraffin-embedded human colon carcinoma tissue, using TNFRSF6B Antibody. The picture on the right is blocked with the synthesized peptide.



Western blot analysis of the lysates from HT-29 cells using TNFRSF6B antibody.

Storage

-20°C for one year

501 Changsheng S Rd, Nanhu Dist, Jiaxing, Zhejiang, China

Tel: 86 21 31007137 | E-mail: save@bt-laboratory.com | www.bt-laboratory.com