

DD2 Polyclonal Antibody

Description

Product type	Primary Antibody
Code	BT-AP02530
Host	Rabbit
Isotype	IgG
Size	20ul, 50ul, 100ul
Immunogen	The antiserum was produced against synthesized peptide derived from human AKR1C2. AA range:21-70
Mol wt	36735
Species reactivity	Human
Clonality	Polyclonal
Recommended application	WB, IHC-p, ELISA
Concentration	1 mg/ml
Full name	DD2 Antibody
Synonyms	AKR1C2; DDH2; Aldo-keto reductase family 1 member C2; 3-alpha-HSD3; Chlordecone reductase homolog HAKRD; Dihydrodiol dehydrogenase 2; DD-2; DD2; Dihydrodiol dehydrogenase/bile acid-binding protein; DD

This product is for research use only, not for use in human, therapeutic or diagnostic procedure.

Background

AKR1C2 encodes a member of the aldo/keto reductase superfamily, which consists of more than 40 known enzymes and proteins. These enzymes catalyze the conversion of aldehydes and ketones to their corresponding alcohols using NADH and/or NADPH as cofactors. The enzymes display overlapping but distinct substrate specificity. This enzyme binds bile acid with high affinity, and shows minimal 3-alpha-hydroxysteroid dehydrogenase activity. AKR1C2 shares high sequence identity with three other gene members and is clustered with those three genes at chromosome 10p15-p14. Three transcript variants encoding two different isoforms have been found for this gene.

Recommended Dilution

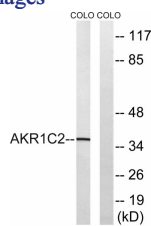
WB: 1: 500 - 1: 2000

IHC: 1: 100 - 1: 300

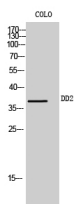
ELISA: 1: 20000

Not yet tested in other applications.

Images



Western blot analysis of lysates from COLO cells, using AKR1C2 Antibody. The lane on the right is blocked with the synthesized peptide.



Western Blot analysis of COLO cells using DD2 Polyclonal Antibody

Storage

-20°C for one year

501 Changsheng S Rd, Nanhu Dist, Jiaxing, Zhejiang, China

Tel: 86 21 31007137 | E-mail: save@bt-laboratory.com | www.bt-laboratory.com