

DDX8 Polyclonal Antibody

Description

Product type	Primary Antibody
Code	BT-AP02553
Host	Rabbit
Isotype	IgG
Size	20ul, 50ul, 100ul
Immunogen	The antiserum was produced against synthesized peptide derived from human DDX8. AA range:391-440
Mol wt	139315
Species reactivity	Human, Mouse
Clonality	Polyclonal
Recommended application	WB, ELISA
Concentration	1 mg/ml
Full name	DDX8 Antibody
Synonyms	DHX8; DDX8; ATP-dependent RNA helicase DHX8; DEAH box protein 8; RNA helicase HRH1

This product is for research use only, not for use in human, therapeutic or diagnostic procedure.

Background

DDX8 is a member of the DEAH box polypeptide family. DEAH-box helicase 8 contains the DEAH (Asp-Glu-Ala-His) motif which is characteristic of all DEAH box proteins, and is thought to function as an ATP-dependent RNA helicase that regulates the release of spliced mRNAs from spliceosomes prior to their export from the nucleus. This protein may be required for the replication of human immunodeficiency virus type 1 (HIV-1). Alternative splicing results in multiple transcript variants.

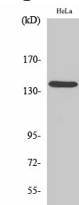
Recommended Dilution

WB: 1: 500 - 1: 2000

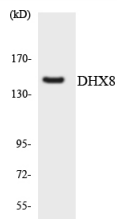
ELISA: 1: 5000

Not yet tested in other applications.

Images



Western Blot analysis of various cells using DDX8 Polyclonal Antibody diluted at 1:500 cells nucleus.



Western blot analysis of the lysates from HeLa cells using DHX8 antibody.

Storage

-20°C for one year

501 Changsheng S Rd, Nanhu Dist, Jiaxing, Zhejiang, China

Tel: 86 21 31007137 | E-mail: save@bt-laboratory.com | www.bt-laboratory.com